

Faith

Adult Special Needs Ministry (Interfaith Group)

“Drop in” for cooking, eating, games, music, drama, movies and outings. Social Integration opportunities
Wisconsin Rapids United Methodist Church 423-8860

Very Special Arts

Dance, drama, creative writing, music, and visual arts

Marshfield Call Kim 359-7944
Wisconsin Rapids Call Julianne 421-5828.

Very Special Arts Choir

Call Julianne 421-5828



Libraries

Contact your local library for a variety of programs!

Charles & Joann Lester Library, Nekoosa 886-7879

<http://www.scls.lib.wi.us/nek>

Lester Public Library, Vesper 569-4669

<http://www.scls.lib.wi.us/ves>

Lester Public Library of Arpin 652-2273

<http://www.scls.lib.wi.us/arp>

Marshfield Public Library 387-8494

<http://www.marshfieldlibrary.org/>

McMillan Memorial Library, Wisconsin Rapids 422-5136

<http://www.mcmillanlibrary.org/index.shtml>

Pittsville Community Library 884-6500

<http://www.scls.lib.wi.us/pit>



Wisconsin Camps

There are many camps capable of addressing camper's special needs and providing respite to parents.

United Way's 2-1-1 Dial 2-1-1

www.arc-wisconsin.org

www.dmoz.org/recreation/

www.familyvillage.wisc.edu/Leisure/camps.html#Wisconsin

Pools

Marshfield High School Pool 384-4642 Ext 0

Wisconsin Rapids, LHS Pool 422-7177

Marshfield Area YMCA 387-4900

South Wood County YMCA 887-3240

Volunteer Opportunities

www.volunteerwoodcounty.org

Golden Park Passes

Free passes are available to national parks, camps or historical sites for those disabled and their escorts. Medical statement verifying permanent disability is required.

<http://www.nps.gov/feespases.htm>

Additional Resources

For more information or questions regarding activities, scholarship or funding assistance, adaptive equipment, skill training to learn an activity, or to meet your transportation needs call:

Midstate Independent Living Consultants (MILC)

Call Becky - 1-800-311-5044 Voice/TTY or 570-0529

CYSHCN Regional Center 1-866-640-4106

United Way's 2-1-1 Dial 2-1-1

A County Case Manager

Aging and Disability Resource Centers 888-486-9545



Many sports and activities are inclusive for special needs participants.

Developed by: *Children with Special Needs Education Committee*

The Children with Special Needs Education Committee promotes choices for individuals and families. We believe in inclusion opportunities for our individuals with Cognitive, Learning, Physical, Mental Health or Behavioral Barriers within typical programming for all children and adults. We have developed this brochure for individuals who choose or want specialized opportunities.

Inclusion or exclusion from this brochure does not constitute endorsement or objection to these opportunities listed.

Contact Karen at the Wood County Health Department

421-8911 with questions, or suggestions of social or recreational activities that may be added to this brochure.

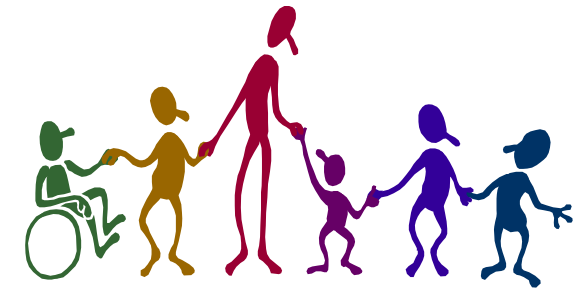
For this updated brochure please go to:

Wood County Web site: <http://www.co.wood.wi.us/health>

Protecting Your Family's Health; Publications 10-08



Wood County Special Needs Recreational Activities



Dial 2-1-1 for more information

www.getconnected211.org

Scouting



Wisconsin Rapids special needs Boy Scouts

Troop 105 Boys ages 13 – Adult
Call Martin – 423-0442

WR special needs Cub Scout Pack

Boys ages 7-12 Call Dave – 423-9202

Marshfield Boy Scouts Troop 345

For boys age 11 to adult with/without special needs

Venture Crew Troop 345

For both boys and girls ages 14 to adult
with or without special needs. Call Paul - 389-9449

Girl Scouts of the Northwestern Great

Lakes - Call 423-6360 or 1-800-472-0073



Hunting or Fishing

United Special Sportsman's Alliance

Special turkey hunt: March /April in Shawano
County

Deer hunt for disabled hunters in fall.

Outdoor water events, fishing in July

W of Black River Falls, 35 minutes South of Pittsville.

No licenses are needed and poles are provided!

Call Bridget 884-2256 or 800-518-8019

www.childswish.com

Special Hunt through WI Deer Hunters Inc.

Class B disability permit from DNR required
North Central Chapter – Call Greg 352-3120

Wilderness Sportsmen's Club

Held early August. Free kids fishing pole provided.
Call Shelly 570-6150

Parks and Rec Depts

Wood County Parks Call 421-8422

<http://www.co.wood.wi.us/parks/countyarks.htm>

Dexter County Park - 8200 State Highway 54, Pittsville

Nepco Lake Park - 1410 Griffith Avenue, Wisconsin Rapids

Beach area, boat ramp, picnic area, playground

North Wood County Park - 7500 Park Lane, Arpin

Disc golf, campsites

Powers Bluff - 6990 Bluff Drive, Arpin

Nature trails, Indian dance rings and burial grounds, downhill
skiing, snowboarding, cross-country skiing, and tubing,
concession stand

Richfield Recreation Area

Cross-country skiing, nature trails

Sandhill Wildlife Area

South Wood County Park -County Road W & Lake Wazeecha

Outdoor cooking two sides of the lake, two swimming
beaches, disc golf, campsites

Wood County ATV Area - Off Hwy. 54, Port Edwards

City Parks



City parks offer play areas, picnic facilities, shelters, swimming pools,
volleyball courts, accessible fishing piers and ponds, baseball diamonds
and backdrops, bike trails, tennis courts, horseshoe pits, basketball
hoops, and wildlife outdoor habitat.

Marshfield Parks & Recreation Department

384-4642 Ext. 0 www.ci.marshfield.wi.us/pr

Wisconsin Rapids Park & Recreation Department

421-8240 www.wirapids.org/wrrec

Municipal Zoos

Wisconsin Rapids, 1900 Block of Gaynor Avenue

Wildwood Park, Hwy 13 South in Marshfield.

Children's Museum

Center Point Mall, Stevens Point Call Tonya 344-2003

A time when only children with Autism or other special needs and
their families are allowed in to explore! First Monday of month
5:00-8:00 p.m. **Free admission**

Travel Tours

Progressive Travel www.progressivetravel.org

Specialty Tours for Cognitively Challenged Adults
Call Bonnie, Linda or Kimberly 659-4391

4-H Club

Dynamite JJ's 4-H Club

Call Barbara 887-3213

Lori Plaza, Area Director 1-800-837-1633



Skating

Skate City Wisconsin Rapids – roller skating 423-4040

South Wood County Recreation Center

Indoor ice skating 421-3311

Marshfield Youth Ice & Recreation Center 384-0025

Speed Skating Club of Central Wisconsin

Special Needs Division Call Rick , President 715-848-6046
or coach Dan, 715-539-2636

Special Olympics

www.specialolympicswisconsin.org

jlyon@specialolympicswisconsin.org

For Adults in Wisconsin Rapids

Track (walk / run)

Bowling

Softball

Bocce Ball

South Wood County Call Mark 325-5856

For School age in Wisconsin Rapids

Track and Field

Bowling

Snowshoeing

Bocce Ball

Cross Country skiing

Wisconsin Rapids Call Deb 422-6091

South Wood County Call Mark 325-5856



School age and Adults in Marshfield

Bowling,

Basketball

Track and Field

Swimming

Turbo-Jav

Softball

Bocce Ball

Marshfield Call Cheri 387-2405

Group Activities

Create and Take (Crafting fun)

Call Bonnie 886-3689

Dancing, Bingo and Pizza

Call Bonnie 886-3689.



Lifelong Learning Opportunities

Dances, carnivals, picnics, and fellowship

Call Sue 387-6788 or Jackie 387-0287

Jeremiah's Crossing – Babcock

Therapeutic horse riding ranch

Call 323-2400

Tie Dye USA

Puppet & lip-sync Call Jackie 387-0287



YMCA

YMCA's offer a wide variety of social and recreational
classes.

Marshfield Area YMCA

387-4900

South Wood County YMCA

887-3240