

HIGHWAY INFRASTRUCTURE & RECREATION COMMITTEE MEETING AGENDA

DAY & DATE: Thursday, April 6, 2017
TIME: 8:00 A.M.
LOCATION: Wood County Highway Department, 555 17th Ave North,
Wisconsin Rapids, WI 54495

1. Call meeting to order.
2. Public comments.
3. Approve minutes of the March 2, 2017 Highway, Infrastructure, and Recreation Committee meeting(s) and the February 7, 2017 minutes of the Wood County State Wildlife Area Advisory Committee.

PARKS:

4. Parks Construction Supervisor report.
 - a. Current projects update
 - b. Employee matters
5. Office Supervisor report.
 - a. Snowmobile/ATV Reports
 - b. Office Update
6. Park and Forestry Director report.
 - a. 2017-2020 Garbage/Recycling bid review and possibly award
 - b. Special Use Permits

FORESTRY:

7. Forest Administrator report.
 - a. Searles Ditch Cleaning Project and Permit Approval.
 - b. Land Gift Discussion and Resolution.
 - c. Timber Sale Update.

8. Correspondence.
9. Approve payment of bills.
10. Revenue report.

HIGHWAY:

11. Discuss paving school. (Jason Richardson, Chris Stoflet, Jeshua Gzibovskis, Joshua Vetrone)
12. Discuss and possibly approve bids for bituminous materials.
13. Discuss and possibly approve bids for chemical warm mix and compaction aid additive.
14. Discuss and possibly approve quotes for milling and pulverizing.
15. Discuss and possibly approve bids for Cold-In-Place Recycling projects.
16. Discuss and possibly approve bids for beam guard installation.
17. Discuss asphalt plant scale quotes, Marshfield storage building, and lights in Marshfield shop.
18. Discuss federal review of Surface Transportation Program.
19. Discuss seasonal weight restrictions.
20. Discuss Highway Commissioner Spring Meeting attendance on Friday, April 28th, 2017.
21. Discuss Work Zone Safety Week from April 3-7th, 2017.
22. Frac Sand update.
23. Current projects update.
24. Approve payment of bills.
25. Accounting Supervisor's Report.
26. Correspondence.
27. Next meeting date: May 4, 2017 at the Wood County Highway Department, 555 17th Ave. North, Wisconsin Rapids, WI 54495 at 8:00 am.
28. Motion to adjourn.

**MINUTES OF THE
HIGHWAY, INFRASTRUCTURE & RECREATION COMMITTEE**

DAY & DATE: Thursday, March 2, 2017
PLACE: Wood County Highway Department, 555 17th Ave North,
Wisconsin Rapids, WI 54495
MEETING TIME: 8:00 A.M.
ADJOURNMENT TIME: 10:37 A.M.
MEMBERS PRESENT: Chairman Al Breu, Supervisor David LaFontaine,
Supervisor William Winch, Supervisor Joseph Zurfluh
EXCUSED: Secretary Marion Hokamp
OTHERS PRESENT: County Board Supervisors Dennis Polach, Bill
Clendenning; Park and Forestry Director Chad Schooley;
Forest Administrator Fritz Schubert; WDNR Forester Steve
Grant; Chris Potts, Landowner; Highway Accounting
Technician Caitly Carmody; Highway Accounting
Supervisor John Peckham; Highway Engineer Roland
Hawk

1. Call meeting to order. Meeting called to order by Supervisor Breu at 8:02 am.
2. Public comments. None.
3. Approve minutes of the February 2, 2017 Highway, Infrastructure, and Recreation Committee meeting(s).

Motion to approve the minutes of the February 2, 2017 HIRC meeting by D. LaFontaine and seconded by J. Zurfluh. All in favor. Motion carried.

PARKS:

4. Parks Construction Supervisor report.
 - a. Current projects update.

Schooley provided a map of the South Park shop layout regarding a comment on the Construction Supervisor's report about an addition. The plan is to remove the old shop located at the end of N Beach Road, renovate the Beach House storage, and add an addition on to the Main Shop on N Beach Road. They are in the process of obtaining estimates.

At this point, the Committee skipped to "6.b. Review and possibly act on quotes for skid steer trailer". Following that, they returned to the Parks Construction Supervisor Report.

- b. Employee matters.

Motion to approve the Parks Construction Supervisor report by J. Zurfluh and seconded by D. LaFontaine. All in favor. Motion Carried.

5. Office Supervisor report.
 - a. Snowmobile/ATV Reports.
 - b. Office Update.

Motion to approve the Office Supervisor report by D. LaFontaine and seconded by B. Winch. All in favor. Motion carried.

6. Park and Forestry Director report.
a. Township of Port Edwards ATV route

Schooley stated that Randy Bowden from the ATV club had visited him to discuss an advisory referendum that passed in the Town of Port Edwards last election regarding adding ATV routes on two town roads – Kimball Ave by the Wood County ATV area and Creamery Rd that goes to the casino.

Schooley stated that he had spoken with Duane Arendt, Town of Port Edwards Chairman, regarding this as well. Arendt had indicated it would be discussed at the next town meeting and that the referendum did not mean that it was a “done deal”.

Schubert questioned how the proposed routes would impact the snowmobile trails out there. Schooley indicated that the proposal has a seasonal and daytime hour restriction, apparently, that would likely handle those questions.

- b. Review and possibly act on quotes for skid steer trailer.

The estimate came in at approx. \$5300 with an additional \$150 for the ramp upgrade. Schooley indicated they would like to move forward with this purchase and put the old trailer up on the auction surplus site.

Supervisor Clendenning indicated that Rule 43 has been passed that may impact the sale of county property that was purchased using tax levy. The Legislative and Judicial Committee are going to be discussing the rule again tomorrow and Clendenning suggested it might be beneficial for Schooley to attend that meeting.

Breu suggested that Schooley look into what the trade-in value would be. Winch suggested that Schooley also discuss the possibility of sharing a trailer with Highway Department if they already have one.

Motion to allow the Parks and Forestry Director to move forward with the purchase of a skid-steer trailer by J. Zurfluh and seconded by D. LaFontaine. All in favor. Motion carried.

- c. Special Use Permits.

Wisconsin State Water Ski Show

July 20th - 23rd

Red Sands Beach

Will be using enclosed shelter building, Red Sands Beach Pavilion, and open shelter.

This is an annual request. There is currently a waiver in place for waiving the cost of the Red Sands Beach Shelter rental. This waiver would be in effect this year and next year and is part of an agreement, approved by the HIRC, and was made when the ski club assisted the Parks Department with the construction of the shelter.

Motion to approve the Special Use Permits by D. LaFontaine and seconded by J. Zurfluh. All in favor. Motion carried.

Winch brought up the matter of putting up acoustic panels in the Nepco Lake Shelter building again. He had attended a function out there recently that had a DJ and the acoustics were so bad that the DJ had to be shut down early. He asked Schooley what the status was of getting the previously discussed acoustic panels installed. Schooley indicated that it was not high on his priority list at the moment, but he could certainly continue to research options and bring it back to the committee next month. The estimates that he did receive were higher than he would like. Breu suggested considering an increase in rental fees to cover the cost of the acoustic panels.

Motion to approve the Park and Forestry Director report by B. Winch and D. LaFontaine. All in favor. Motion carried.

FORESTRY:

7. Forest Administrator report.
 - a. Timber Sale Update

Revenue is down for February due to an early thaw and the unseasonably warm weather. There is still some hauling being done, but no active logging at the moment.

Motion to approve the Forest Administrator's report by D. LaFontaine and B. Winch. All in favor. Motion carried.

8. Correspondence. None.
9. Approve payment of bills. **Motion to approve the bills by J. Zurfluh and seconded by B. Winch. All in favor. Motion carried.**
10. Revenue report.

Schooley indicated they do not have a revenue report completed this month due to their Office Supervisor being out on leave, but will bring February's and March's to the April meeting.

Committee took a break at 9:50 AM and resumed at 9:59 AM.

HIGHWAY:

11. Review and approve CTH U contract with Omni Associates.

Hawk shared an update on the STP-Urban project on CTH U. Omni Associates had forwarded a draft of their engineering contract on Friday. Hawk had budgeted \$250,000-\$275,000 for design and engineering for the project. The first contract came in at \$320,000. Hawk had been working on ways to get the design cost down and will be discussing them with Commissioner Doug Passineau when he returns from vacation.

Winch asked if this was the project that Classic Development had said they would pay for. Hawk stated that Classic Development is doing a different portion of CTH U around the lake whereas this project is for CTH U from STH 54 to S Biron Dr. Winch asked if private contractors will be completing the construction on the project. Hawk stated that yes, contractors will be bid out through the Department of Transportation's process.

LaFontaine asked if there would be parking restrictions on the new roadway. Hawk stated that there would be no parking allowed on the road.

Hawk stated that public meetings will be held further on in the process to advise landowners and community members of the details of the project and construction plan and that the contractors will be expected to do a weekly update to the DOT once the project is underway in 2020.

At this point, the committee skipped to agenda item 19 as the landowner in question was present at the time. Then they returned to item 12.

12. Discuss Sheriff Department weight limits program.

All seasonal weight limits have been posted. Peckham advised the committee of a procedure Highway has where they provide the Sheriff's Department with additional funding for their staff to work overtime to enforce the weight limits. Around May they provide Highway with a report letting them know how the season went.

13. Discuss and possibly act on quotes for replacement of rear windows.

The Highway Department received one quote for the replacement of the rear windows. It was higher than originally thought, but they would still like to move forward with it.

Motion to approve the Altmann Construction quote for replacement of rear windows by D. LaFontaine and second by J. Zurfluh. All in favor. Motion carries.

14. Discuss and possibly act on quotes for asphalt plant scale.

Highway received three quotes for the replacement of the asphalt plant scale. They are replacing it because the current scale is too short and therefore causes issues with loading of the trucks which also causes issues with segregation of asphalt. The scale that is currently there will be moved to the Marshfield shop.

Each quote had some deviation from the specifications. Peckham requested that the committee approve the Commissioner to move forward with the quote that is deemed most advantageous to the County so Passineau may further review the specifications and deviations and find the best fit.

Motion to approve the Highway Commissioner to move forward with the quote deemed most advantageous to the County by J. Zurfluh and seconded by D. LaFontaine. All in favor. Motion carries.

15. Discuss personnel updates.

Peckham shared that Highway Accounting Technician Caity Carmody had been appointed as an interim Director to the CHEMSPro Board of Directors. CHEMSPro is the cost accounting software that the Highway department uses to track expenditures, materials, and equipment. Carmody had been noted for her skills working with the program by board members when implementing RTVision electronic time keeping. The Board meets every other month and puts on a conference every fall.

Motion to formally commend Caity Carmody for her achievement in being appointed to the CHEMSPro Board of Directors made by D. LaFontaine and seconded by J. Zurfluh. All in favor. Motion carries.

Tyler Dove recently started in the capacity of Truck Operator.

The mechanic position is as yet unfilled, but the department has held interviews and is pursuing a candidate.

16. Discuss salt shed inventories.

The State salt sheds are quite low and the State DOT has indicated they do not want to order more salt at this time. The Highway Department has not yet utilized their early fill, so they are being allowed to order more salt.

17. Discuss bituminous bids.

Bituminous bid specifications have been sent out as of yesterday. Opening will be in April.

18. Discuss hauling of gravel.

Peckham advised the committee that the Department is required to spend down 5% of the debt issue proceeds within 6 months of the bond issue, which was done in October of 2016. In order to meet this obligation, the Department stockpiles ½" gravel and manufactured sand at the asphalt plant. Those products will be used exclusively for highway construction projects during the summer.

19. Discussion and possible action on driveway location near CTH V and Cary-Hiles Road.

Hawk provided the following to the committee: an aerial view of the lot in question, a copy of Chapter 701.05 Section (6) of the 701 Land Subdivision Ordinance, and a copy of Wood County Highway Department's Policy #9 "Driveways – County Trunk Highways". Both the policy and the ordinance show language indicating that when a property borders both a county highway and a lower jurisdiction road (such as a town road), the access will be from the lowest jurisdictional road. The property in question borders CTH V and Cary-Hiles Road and the landowner, Chris Potts, is requesting access from CTH V instead of Cary-Hiles Road, contrary to County policy and ordinance.

Potts stated that because of the drainage on his lot, the septic system would have to be in the southern portion of the lot that borders Cary-Hiles Road and the house has to be built on the north end of the lot, bordering CTH V. He is requesting a variance of the policy so that instead of building a 400'+ driveway from Cary-Hiles Road to his house, he could build an approximately 200' driveway from CTH V. He indicated he can position the driveway from CTH V so that it is at least 500' from the intersection with Cary-Hiles Road to stay in compliance with that portion of the policy.

Breu asked if building the driveway off of Cary-Hiles Rd would change the planned orientation of the house. Potts stated that yes, it would. He would prefer the orientation to be facing CTH V as his family also owns land across the county highway to the west.

Winch asked if we know what the average daily traffic count is for that roadway. Hawk stated the last counts are not recent (5+ years old), but that he believes the count was about 300.

Potts asked if approved, how far his house should be from the north lot line. Hawk stated he believed the minimum was 25'.

Motion to approve a variance to the Wood County Highway policy to allow Chris Potts to build a driveway off of County Trunk Highway V at least 500' north of the center of the intersection of CTH V and Cary-Hiles Road by D. LaFontaine and seconded by J. Zurfluh. All in favor. Motion carries.

Hawk informed Potts that Patrol Superintendent Bernard Karaliunas would be in touch with him regarding the actual permit and the details of what culvert pipe is allowed there.

20. Frac Sand update.

There was an article in the newspaper indicating that the City of Marshfield is suing Completion about \$153,000 for back taxes. Our latest invoice to them was \$203,000.

21. Current projects update.

22. Approve payment of bills.

Motion to approve payment of Wood County Highway bills by D. LaFontaine and seconded by B. Winch. All in favor. Motion carried.

23. Accounting Supervisor's Report.

Motion to approve the Accounting Supervisor's report by W. Winch and seconded by D. LaFontaine. All in favor. Motion carried.

24. Correspondence.

25. Next meeting date: April 6, 2017 at Wood County Highway Department, 555 17th Ave. North, Wisconsin Rapids, WI 54495

26. Motion to adjourn.

Motion to adjourn by W. Winch and seconded by D. LaFontaine at 10:37 AM. All in favor. Motion carried.

Signed by, Supervisor Dave LaFontaine, Acting Secretary



Minutes taken by Caity Carmody, Highway Accounting Technician

WOOD COUNTY STATE WILDLIFE AREA ADVISORY COMMITTEE
FEB 7TH 2017 SANDHILL EDUCATION CENTER, BABCOCK WI

1. GEORGE BARTELS called the meeting to order at 5:30 pm
2. review agenda, ok
3. no citizen participation
4. motion to approve the minutes of the october 11 2016 meeting by curt, 2nd by dale
motion carried
5. Evan Wilson, UW Madison, gave us a presentation on different studies of animals in central Wisconsin, that are connected to each other. Prey/predator interactions between fisher, snowshoes, porcupines, and grouse. when one population goes up, how does it affect the others. are the population dynamics correlated with other species
6. stan pliss update, have not met recently, will meet with neil to decide how to fund a project on summers marsh. They will have the buffalo feed this fall
7. neil gave us a presentation of planned work in the wood county, Sandhill, and meadow valley properties. The west dike renovation could use help in funding
8. curt pluke motioned, that the committee recommend, that the wood county allotment of \$4000 be used to help fund the west dike renovation of the 4th impoundment
9. next meeting april 4th 2017, Sandhill
Those signing the sheet for attendance were scott mc auley, jim winkler, george bartels, dale weis, curt pluke, fritz Schubert, scott areneson, Erica Taylor wdnr le, john kubisiak, mike Wipli, neal paisley, dennis polach

PARKS CONSTRUCTION SUPERVISOR REPORT

April 6, 2017

By D. Quinnell

CURRENT PROJECTS

- We took quotes from local companies for the Wood Fence at South Park and the lowest quotes went to:
Palmers Cornerstone Concrete for \$11,300, Security Fence for \$2822, G&C Carports for \$3790, for a total of - \$17,912. The building will begin as soon as possible after the road limits are removed.
- The addition to the South Park Shop will be on hold until we know if the budget will bare it.

MAINTENANCE OPERATIONS

- All parks are gearing up for summer camping season. We will have the water tested and the plumbing operational by April 28th.

EMPLOYEE MATTERS

- All Rangers will be returning this year.
- We have three LTE's returning and we will need to hire four more by May26th.
- We will be having our spring employee meeting and training sometime in April.

OTHER

- The new skid steer trailer will be arriving soon and we will be auctioning some more used articles off in April.
- We had some damage to the stone bridge in North Park caused by ice chunks flowing in the early thaw. I am getting bids on repairing the damage.

WOOD COUNTY PARK & FORESTRY

OFFICE SUPERVISOR REPORT

April 6, 2017

By: Sandra Green

SNOWMOBILE:

- The March meeting was held on March 6th wrapping up the end of the 2016-2017 snowmobile season. Discussion included the 2018 County Ride whether to have in January as it's been canceled the last three years due to closed trails in February. The consideration date Sandra mentioned was January 20, 2018. The maintenance applications for 2017-2018 were sent to Annie Loechler. Sandra will be setting up a "SNARS Train the Trainer" session sometime in the next few months for the clubs to learn how to navigate this system. There were 16 deaths on the snowmobile trails in Wisconsin this year.

OFFICE:

- Created three poster boards for the Powers Bluff Development Project presentation at Powers Bluff.
- Attended the Powers Bluff Development Project presentation with Chad on March 22nd.
- Attended the Department Head Meeting for Chad.
- Coordinated delivery of Camp Ranger uniforms with GK Uniforms.
- Coordinated with EO Johnson on move of copier and two printers for 4/24/17 to River Block.
- Sent letters to returning Camp Rangers and LTE's for this summer.
- Volunteered to become a Wellness Champ representing Park & Forestry.
- Attended the Wellness Meeting on March 21st.
- Participated in the "garbage services" bid opening on March 31st.
- Designed and ordered new boat launch permits from Diamond Business Graphics.
- Submitted revisions to the 2017 Summer Brochure. Shipment is slated for 2nd week in April.
- Ordered supplies for the 2017 campground spring supply order from Jaime in Purchasing.
- Placed supply orders with Ultra Chem and State Chemical for the campgrounds.
- Worked with Chris Markworth in setting up the Powers Bluff Development Project webpage on the Wood County website. Established PAY PAL buttons for donations.
- Worked with Marla in Finance and completed the Fixed Asset documents & updated inventory.
- Began packing up some things for the move to River Block.
- Continued to post information on our Facebook page and keep it active.
- Created & posted on Facebook, the "1st Annual Facebook Park & Forestry Photo Contest".
- Began work on the 2016 Wood County Parks & Forestry Annual Report and Power Point.

TOWN OF PORT EDWARDS

RECEIVED

March 17, 2017

MAR 22 2017

Wood County Park & Forestry

Wood County Park and Forestry
400 Market Street
Wisconsin Rapids, WI 54495

Re: ATV/UTV Ordinance

Enclosed is a copy of the Town's ATV/UTV Ordinance for your information and to make you aware that some of the Town of Port Edwards Roads will be open to ATV/UTV traffic. If more information is needed please contact Town Chairman Duane Arendt.

Sincerely,



Sharon Stelmacher, Clerk
Town of Port Edwards

TOWN OF PORT EDWARDS
All-Terrain Vehicle Routes Ordinance 2017-1

STATE OF WISCONSIN
Town of Port Edwards
Wood County

RECEIVED

MAR 22 2017

Wood County Park & Forestry

SECTION I – TITLE AND PURPOSE

The title of this ordinance is the Town of Port Edwards All-Terrain Vehicle Route Ordinance. The purpose of this ordinance is to establish all-terrain vehicle routes in the town and to regulate the operation of all-terrain vehicles in the town and shall supersede any other ordinance pertaining to same.

SECTION II – AUTHORITY

The Town Board of the Town of Port Edwards, Wood County, Wisconsin, has the specific authority to adopt this All-Terrain Vehicle Route Ordinance under s. 23.33 (8) (b) and (11), Wis. Stats.

SECTION III – ADOPTION OF ORDINANCE

The Town Board of the Town of Port Edwards, Wood County, Wisconsin, by this ordinance, adopted on proper notice with a quorum and roll call vote by a majority of the town board present and voting, provides the authority of the town to designate all-terrain vehicle routes in the town and to regulate the use of those routes and all-terrain vehicles in the town.

The Town of Port Edwards shall retain the right to close any town road to UTV/ATV operation for special events, unlawful use, and road construction/repair without advanced notice.

SECTION IV – OPERATION OF ALL-TERRAIN VEHICLES

Pursuant to s. 23.33 (4) (d) 4., Wis. Stats., except as otherwise provided in s. 23.33 (4), Wis. Stats., no person may operate an all-terrain vehicle on the roadway portion of any highway in the town except on roadways that are designated as all-terrain vehicle routes by this ordinance. Operation of all-terrain vehicles on a roadway in the town that is an all-terrain vehicle route is authorized only for the extreme right side of the roadway except that left turns may be made from any part of the roadway that is safe given prevailing conditions.

The following routes are designated all-terrain vehicle routes in the town:

- Kimball Avenue, from Wood County ATV Park, South to County Line Road
- Creamery Road, from Kimball Avenue, West to White Tail Crossing gas station
- County Line Road, from Kimball Avenue, East to 23rd Avenue
- County Line Road, from Kimball Avenue, West to County Highway G, continuing to the Remington Town Line

SECTION VI – CONDITIONS APPLICABLE TO ALL-TERRAIN VEHICLE ROUTES

The Town of Port Edwards accepts no liability for the operation of UTV/ATVs on any town road under the provisions of this ordinance. Operation of UTV/ATVs is at the operators own risk. UTV/ATVs that operate on the aforementioned routes shall abide by all state laws regulating UTV/ATV operation.

Pursuant to s. 23.33 (8) (d), Wis. stats., the following restrictions are placed on the use of the town all-terrain vehicle routes designated by this resolution:

- A. Routes shall be marked with uniform all-terrain vehicle route signs in accordance with s. NR 64. 12 (7), Wisconsin Administrative Code. No person may do any of the following in regard to signs marking town all-terrain vehicle routes:
 - 1. Intentionally remove, damage, deface, move, or obstruct any uniform all-terrain vehicle route or trail sign or standard or intentionally interfere with the effective operation of any uniform all-terrain vehicle route or trail sign or standards if the sign or standard is legally placed by the state, any municipality or any authorized individual.
 - 2. Possess any uniform all-terrain vehicle route or trail sign or instruction of information of the public, unless he or she obtained the uniform all-terrain vehicle route or trail sign or standard in a lawful manner. Possession of a uniform all-terrain vehicle route or trail sign or standard creates a rebuttable presumption of illegal possession.
- B. Operation shall be subject to all provisions of s. 23.33, Wis. Stats., which is adopted as a part of this ordinance by reference, pursuant to s. 23.33 (11), Wis. Stats.
- C. A copy of this ordinance shall be sent by the town clerk to the Wood County Sheriff's Department.
- D. All UTV/ATV operators shall observe posted speed limit of 35 mph. All UTV/ATV operators shall ride single file on the far right hand land of travel.
- E. The routes shall be open from April 1 through October 31, from dawn to dusk.

The Town Board reserves the right to rescind this ordinance at any time at its discretion.

SECTION VII – ENFORCEMENT

This ordinance may be enforced by any law enforcement officer authorized to enforce the laws of the state of Wisconsin.

SECTION VIII – PENALTIES

The penalties under in s. 23.33 (13) (a), Wis. Stats., are adopted by reference.

SECTION IX – SEVERABILITY

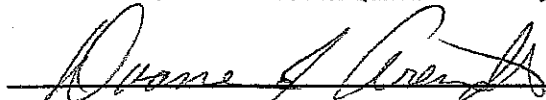
If any provision of this ordinance or its application to any person or circumstance is held invalid, the invalidity does not affect other provisions or application of this ordinance that can be given effect without the invalid provision or application, and to this end, the provisions of this ordinance are severable.

SECTION X – EFFECTIVE DATE

This ordinance is effective on publication or posting. The designated routes shall be reviewed in the spring of 2019.

The town clerk shall properly publish this ordinance as required under s. 60.80, Wis. Stats.


Adopted this 14th day of March, 2017.


Duane Arendt, Chairman

3/14/2017
Date


Jeff O'Donnell, Supervisor

3-14-2017
Date


Tim Schmidt

3/14/2017
Date

Attest:


Sharon Stelmacher, Clerk

3/14/2017
Date

Note: Information on all-terrain vehicles generally, including registration requirements and application, can be accessed of the Department of Natural Resources web site at the following address:

<http://www.dnr.state.wis.us/org/caer/cs/Registrations/ATV.htm>

Park and Forestry Director Report

By Chad Schooley, Park and Forestry Director
April 6, 2017
HIRC meeting

- I will not be attending the April HIRC. I will be in Eau Claire on April 6-7 for the Wisconsin Parks and Recreation Association (WPRA) Spring Workshop. Sandy Green will be attending in my absence.
- I gave the Powers Bluff Development Project presentation to the WR noon Rotary Club, Arpin town board meeting, and at the public informational meeting at Powers Bluff on March 22nd. I will be meeting with representatives from the Ho-Chunk and Prairie Band Potawatomi Nation in the near future as well. All presentations and feedback have been very positive thus far. We did receive a \$1,000.00 donation from WE Energies Foundation for the project.
- Our department has been planning for our Riverblock move coming up. Our plan is to move on Monday, April 24th. We will be hiring Rapp's Moving and Storage, Inc. for the major part of the move. Our staff will be packing and arranging much of the office supplies to reduce the cost of the move. The cost estimate to pack and move everything is \$3,500.00. If approved by the Executive Committee, up to \$2,500 of that cost will be paid for out of the county's contingency fund.
- The bid summary sheet for the 2017-2020 waste/recycling service will be brought to the meeting for review and possible award.
- It has been brought to my attention once again, by Supervisor Rozar, that the departments' title "Park and Forestry Department" should more accurately be changed to "Parks and Forestry Department". I agree with Supervisor Rozar. I am curious what the process would be in order to make this simple change. This is not on the agenda, but I wanted the committee to think about it and discuss at the meeting.

March Events – 8 shelter reservations,

Special Use Permits

June 2, 2017 set up, June 3 event: WR Kiwanis club youth outdoors skills day, South Park. The RSBP is reserved for this event for Saturday, June 3.

June 17, 2017 and July 15, 2017 event: Gorilla Boy Disc Sports tournaments, North Park. Expected number of participants-100. 7am-7pm. There has not been any fee charged to this group in the past. It does seem to be getting larger each year. A nominal fee may be in order due to the increased garbage, restroom use, course mowing, and closing the course to other general park users. There is an entrance fee for participants, so a portion of that could go towards the reservation fee. I would suggest a \$50 fee per day for the use of the course. This would need to be consistent with any other tournaments that would be held throughout the summer as well.

Instructions: See page 3

Application fee: \$25.00, \$50.00, or \$125.00 dependent on type of transaction requested.

WOOD COUNTY PARK AND FORESTRY DEPARTMENT

LAND TRANSACTION APPLICATION

1. Type of request (mark one).

- _____ a. Purchase of County Land.
- _____ b. Trade for County land.
- _____ c. Easement request.
- X d. Request permit or agreement for special use.

2. Applicant information.

Name C-J Searles Cranberry Co., LLC

Address 688 Rangeline Road

Babcock, WI 54413

Phone Business 715 / 884-6050 Home 715 / 884-6050

3. Brief description of your project or request.

We wish to clean a ditch and replace a culvert on Wood County
Forest land.

4. Location (Legal description, attach map if possible).

LAND TRANSACTION APPLICATION
CONTINUED, PAGE 2

T21N R4E S18

Please see attached map.

5. Purpose and need (Include history and background as appropriate).

The ditch we wish to clean and one of its associated culverts, parts of the former Cranberry Creek drainage district, have not been maintained in some time and now lack the flow characteristics for which they were designed. This project will restore proper flow to the ditch in question which will benefit the water management capabilities of our farm, located downstream.

\\LH01TN\LD01TN.APL

LAND TRANSACTION APPLICATION
CONTINUED, PAGE 3

6. Physical changes proposed (Describe plans for land clearing, ditching, earth moving, etc.).

Trees will need to be removed from the north ditchbank to allow passage of equipment appropriate for ditch maintenance. If no other entity can be found to contract with Wood County for said removal of trees, C-J Searles Cranberry Co. will perform the tree removal and compensate Wood County for the wood. Dredging will occur only within the confines of the original ditch, which is approximately 25 feet wide. All spoils will be placed on the cleared ditchbank.

7. Construction plans (Describe plans for any structures).

No structures are to be built.

8. Alternatives (Is it possible to do your proposal on other lands? Why or why not?)

The former Cranberry Creek drainage district was designed to take advantage of the local topography to most efficiently conduct water. The section of ditch in question, being upstream of the C-J Searles Cranberry farm, is uniquely situated to enhance the farm's water management. Additionally, simple maintenance of an existing ditch benefits from multiple permitting exemptions (see below).

9. List any permits you will need to install this project.

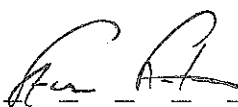
This project is exempt from US Army Corps of Engineers and Wisconsin Department of Natural Resources permitting. Please see attached letters of exemption. A floodplain permit from Wood County Planning and Zoning will be required.

I hereby certify that the information I have provided is true to

LANDFORM/LANDFORM, A.P.L.

LAND TRANSACTION APPLICATION
CONTINUED, PAGE 4

the best of my knowledge.

2/6/17 
Date Signature



MVP-2017-00069-SJW: Project Location



Legend

- Intermittent Streams
- 24K Hydrography Streams and Rivers
- 24K Hydrography Lakes and Open Water
- Municipality
- State Boundaries
- County Boundaries
- Major Roads
 - Interstate Highways
 - State Highways
 - US Highways
- County and Local Roads
 - County Road
 - Local Road
- Railroads
- Tribal Lands
- Rivers and Streams
- Intermittent Streams
- Lakes and Open water

0.3 0 0.13 0.3 Miles

NAD_1983_HARN_Wisconsin_TM
© Latitude Geographics Group Ltd

1:7,920

NOT A MAP. The information shown in this map has been derived from a variety of sources, including aerial photography, satellite imagery, and other data. It is not intended to be used for navigation or other purposes. The information is provided as a reference only. For more information, see the 2017 User Guide with page 1.

Notes

See 18.7.21% R 4E, Wood County, Wisconsin.



REPLY TO ATTENTION OF
REGULATORY BRANCH

DEPARTMENT OF THE ARMY
ST. PAUL DISTRICT, CORPS OF ENGINEERS
180 FIFTH STREET EAST, SUITE 700
ST. PAUL, MN 55101-1676

Regulatory File No. MVP-2017-00069-SJW

Steve Searles
CJ Searles Cranberry Company
P.O. Box 213
Babcock, Wisconsin 54413

JAN 25 2017

Dear Mr. Searles:

This letter concerns your request for Department of the Army authorization to excavate accumulated sediment material from the bed of a 0.8 mile long segment of an unnamed ditch for maintenance purposes. (See attached figure labeled MVP-2017-00069-SJW: Project Location). The ditch would be excavated to its historic dimensions, and all excavated material resulting from the proposed work would be discharged alongside the ditch. The project site is located in Sec. 18, T. 21N., R. 4E., Wood County, Wisconsin. The Corps has determined that a Department of the Army permit is not required for your proposed activity.

The proposed work would result in a discharge of dredged or fill material into a water of the United States. However, based on the information you provided, we have determined the discharge is exempt from the requirement for a Section 404 permit pursuant to Subsection 404(f)(1)(b) of the Clean Water Act¹ as that exemption is further described in Department of the Army regulations at Title 33 Code of Federal Regulations, Section 323.4(a)(2).

Please be aware that we have relied on your description of the work and your means of accomplishing that work in making our exemption determination and that you are responsible for insuring that the work is performed in a manner consistent with that Section 404(f) exemption. A change in the project design, scope, purpose, or the method of undertaking the work may make your project ineligible for the exemption and trigger the requirement for a Department of the Army permit. Should that occur, any discharge of dredged or fill material into a water of the United States without a permit would be in violation of Section 301 of the Clean Water Act.² Therefore, it would be prudent for you to coordinate any changes to your project with the Corps in advance of undertaking the work so that the Corps can, if necessary, issue a revised exemption determination.

This determination does not eliminate the need for any other Federal, state, or local permits, licenses, or authorizations required to complete the proposed work. You are advised to contact your local planning and zoning department and the Department of Natural Resources to determine what, if any, local or state authorizations are required.

¹ 33 U.S.C. § 1344(f)(1)(b).

² 33 U.S.C. § 1311.

From: Steve Searles <revstevenandrew@yahoo.com>
Subject: Fwd: Ditch maintenance Wood County Searles Cranberry
Date: February 6, 2017 at 11:03 AM
To: Britt Searles <bwsearles@icloud.com>



Sent from my iPad

Begin forwarded message:

From: "Betthauser, Bradley J - DNR" <Bradley.Betthauser@wisconsin.gov>
Date: December 19, 2016 at 3:45:34 PM MST
To: Steve Searles <revstevenandrew@yahoo.com>
Cc: "Pericak, David M - DNR" <David.Pericak@wisconsin.gov>, "Patrick, Keith A - DNR" <Keith.Patrick@wisconsin.gov>, "Behlen, Joseph R - DNR" <Joseph.Behlen@wisconsin.gov>, Samuel Woboril USACE <samuel.j.woboril@usace.army.mil>, "jbrewbaker@co.wood.wi.us" <jbrewbaker@co.wood.wi.us>
Subject: RE: Ditch maintenance Wood County Searles Cranberry

Steve,

Thank you for contacting the department about your proposed project located in T21N R4E S18, Wood County.

Maintenance of drainage ditch:

According to the information that you provided, there is not Chapter 30 jurisdiction over the maintenance of the ditch because the purpose of the ditch is for cranberry culture. Chapter 94 removes this project from DNR Chapter 30 jurisdiction.

Replacement of culvert:

According to the information that you provided, you may qualify for an exemption (2015 ACT 55 Replacement Culvert Exemption). This means that you may not have to submit a culvert permit application or pay a fee. Please review the culvert exemption checklist at <http://dnr.wi.gov/topic/waterways/documents/permitExemptionChecklists/12-culvertReplacement.pdf> to be sure you meet all of the necessary criteria. In addition, if you meet all of the exemption criteria, the replacement of your culvert must still meet the following standards.

- Both ends of the culvert shall be installed so a minimum of 4" with a maximum of 8" of a round culvert or 6" of a pipe arch culvert lies below the bed of the waterway. Note: In most cases, the pipe arch culvert is the recommended culvert design because it is effective in low clearance installations, generally requires less fill, and the wider bottom allows for the better retention of natural substrates.
- Erosion control measures shall meet or exceed the technical standards for erosion control approved by the department under subch. V of ch. NR 151. Any area where topsoil is exposed during construction shall be immediately seeded and mulched or riprapped to stabilize disturbed areas and prevent soils from being eroded and washed into the waterway. Note: These standards can also be found by visiting Storm water runoff permits at <http://dnr.wi.gov/topic/stormwater/> OR by viewing the Wisconsin administrative code at <http://www.legis.state.wi.us/rsb/code/nr/nr320.pdf>. [PDF exit DNR]

Wisconsin State Statute 30.123(6)(d) has the wording for the culvert exemption criteria that you most likely qualify for and is worded as follows:

"The construction or placement and the maintenance of a replacement culvert that is placed in substantially the same location as the culvert being replaced if the replacement culvert is constructed or placed using best management practices to comply with water quality standards under subch. II of ch. 281."

Please recognize that you are also responsible for obtaining all necessary local (e.g. city, town, village or county) and U.S. Army Corps of Engineer permits or approvals in addition to any applicable state permits prior to commencing any work at the project site!

You indicated to me that there will be no wetland fill associated with this project and that the dredged material will be deposited on existing spoil banks. And that the ditch would be maintained to its original dimensions.

If you have any questions regarding this finding, please contact me. This email serves as your notice.

Thanks for contacting the Department prior to starting your project and I also appreciate your patience in this matter!

Sincerely,

We are committed to service excellence.

Visit our survey at <http://dnr.wi.gov/customersurvey> to evaluate how I did.

Brad Betthauser

Water Regulation and Zoning Specialist
Wisconsin Department of Natural Resources
473 Griffith Ave.
Wisconsin Rapids, WI 54494
Phone: (715) 421-7815
Fax: (715) 421-7830
bradley.betthauser@wisconsin.gov



dnr.wi.gov



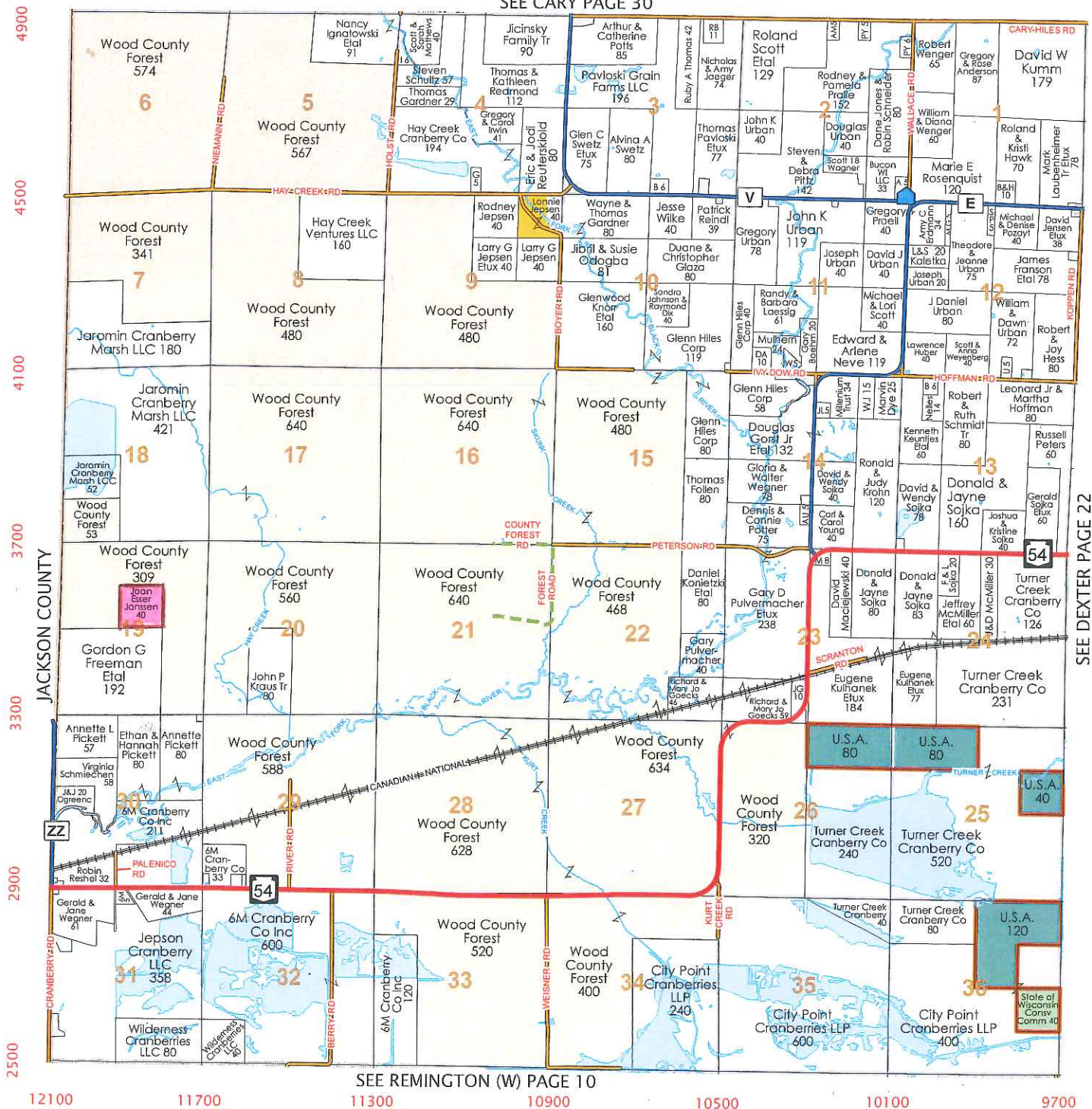


Hiles

Township 22N - Range 2E

Copyright © 2016 Mapping Solutions

SEE CARY PAGE 30



WISCONSIN FARM & BUSINESS, LLC

P.O. Box A
Pittsville, Wisconsin 54466

Farm & Business Records
Accounting, Tax Preparation, Analysis

LISA ORTNER, EA

Office: 715-884-2999

Fax: 715-884-6711
Email: lisa.wisfarm@tds.net

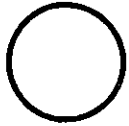
HAY CREEK Pallet

A CURATOR TREASURES
AGED TREASURES
THE WISDOM WITHIN

5094 2nd Avenue • Pittsville, WI 54466

Phone: 715-884-2930 • Cell: 715-572-0703

Email: tom@haycreekpallet.com • www.haycreekpallet.com



RESOLUTION#

Introduced by Highway Infrastructure & Recreation Committee
Page 1 of 1

SMG

Motion:	Adopted: <input type="checkbox"/>
1 st _____	Lost: <input type="checkbox"/>
2 nd _____	Tabled: <input type="checkbox"/>
No: _____ Yes: _____	Absent: _____
Number of votes required:	
<input checked="" type="checkbox"/> Majority	<input type="checkbox"/> Two-thirds
Reviewed by: <u>PAK</u> , Corp Counsel	
Reviewed by: <u>mm</u> , Finance Dir.	

INTENT & SYNOPSIS: Accept donation of 40 acres of land from a private individual and enter into Wood County Forest.

FISCAL NOTE: None.

WHEREAS, A private landowner who owns a 40-acre parcel in the Town of Hiles has indicated a desire to gift said parcel to Wood County and

WHEREAS, said parcel under the ownership of Joan Esser Janssen is located in the SW 1/4, NE 1/4, Section 19, Township 22 North, Range 2 East and is surrounded by Wood County Forest Lands on three sides, and

WHEREAS said parcel contains no road frontage, is largely classified as wetlands, and is not buildable, and

WHEREAS taxes on said parcel are paid and current,

WHEREAS said parcel contains productive forest land and is well suited to meeting county forest goals of timber production, wildlife habitat, and recreation, and

WHEREAS said parcel blocks well with Wood County Forest lands, and its' addition to the Wood County Forest will simplify boundaries and future management.

THEREFORE BE IT RESOLVED that the Wood County Board of Supervisors humbly accepts the gift of said parcel with great appreciation and gratitude, and

THEREFORE BE IT RESOLVED that the Wood County Board of Supervisors does hereby authorize the Chairperson of the Wood County Board, Wood County Clerk and the Wood County Forest Administrator to sign documents necessary to acquire said parcel and enter it under the Wood County Forest under State Statute 28.11.

		NO	YES	A
1	LaFontaine, D			
2	Rozar, D			
3	Feirer, M			
4	Wagner, E			
5	Fischer, A			
6	Breu, A			
7	Ashbeck, R			
8	Kremer, B			
9	Winch, W			
10	Henkel, H			
11	Curry, K			
12	Machon, D			
13	Hokamp, M			
14	Polach, D			
15	Clendenning, B			
16	Pliml, L			
17	Zurfluh, J			
18	Hamilton, B			
19	Leichtnam, B			

Committee Report

County of Wood

Report of claims for: PARK & FORESTRY DEPT.

For the period of: MARCH PREPAIDS for (APRIL HIRC)

For the range of vouchers: 21170049 - 21170090

Voucher	Vendor Name	Nature of Claim	Doc Date	Amount	Paid
21170049	MENARDS-MARSHFIELD	Brooms, Janitorial for NP	02/28/2017	\$98.41	P
21170050	NELSON PAINT COMPANY THE	80-Cases of Paint-Forestry	02/28/2017	\$6,045.20	P
21170051	POMP'S TIRE SERVICE INC - GREEN BAY	Tractor Tire Repairs-NP	02/28/2017	\$47.64	P
21170052	QUALITY DOOR & HARDWARE	Latchbolt-SP Shop	02/28/2017	\$70.00	P
21170053	RAPIDS RENTAL & SUPPLY	Safety Glasses & Helmet	02/28/2017	\$79.94	P
21170054	SHERWIN-WILLIAMS CO THE	Green Picnic Table Paint-SP	02/28/2017	\$105.34	P
21170055	WASTE MANAGEMENT	Garbage Service for Parks	02/28/2017	\$965.28	P
21170056	WE ENERGIES	Gas Service for SP	02/28/2017	\$9.24	P
21170057	ACE HARDWARE	Supplies for SP Shop	03/09/2017	\$23.70	P
21170058	ALLIANT ENERGY/ WP&L	Electric Srv-ATV/Nepco Shelters	03/09/2017	\$387.92	P
21170059	BUDS CORNER MART	Gasoline for SP	03/09/2017	\$323.89	P
21170060	EMMONS BUSINESS INTERIORS	Office Desk Chair-Sandy's	03/09/2017	\$366.52	P
21170061	HAAS BUILDER SUPPLY	NP Shop Items, DP Shop Shelves	03/09/2017	\$344.68	P
21170062	LAKESIDE OASIS LLC	Gasoline for DP Vehicles, Etc.	03/09/2017	\$257.00	P
21170063	OAKDALE ELECTRIC CO	Electric Service for DP	03/09/2017	\$930.95	P
21170064	PITTSVILLE FARM & HOME CENTER	Park & DP Shop Building Items	03/09/2017	\$230.95	P
21170065	PROVISION PARTNERS	Diesel for Forestry	03/09/2017	\$42.35	P
21170066	SPECTRA PRINT	PB Project Brochures (500)	03/09/2017	\$312.00	P
21170067	SUNSHINE CAR CARE LLC	Oil Change-Ford Ranger/Forest	03/09/2017	\$33.98	P
21170068	WATER WORKS & LIGHTING COMM	Electric Service for SP	03/09/2017	\$722.90	P
21170069	WOODTRUST BANK NA	DP Shop & Safety Items,Fuel Tank	03/09/2017	\$1,648.79	P
21170070	4-H LEADERS ASSOCIATION	Plat Book for 2017-Office	03/14/2017	\$30.00	P
21170071	ALLIANT ENERGY/ WP&L	Electric Service for NP & PB	03/14/2017	\$840.79	P
21170072	GRAY'S SERVICE	Ford F350 Flatbed Transmission	03/14/2017	\$2,694.29	P
21170073	HOME DEPOT CREDIT SERV (Parks)	Park & Building Items-NP & SP	03/14/2017	\$309.36	P
21170074	INSIGHT FS	LP for NP Shop	03/14/2017	\$306.87	P
21170075	KING COMPANY LLC THE	MTR Trailer W/Ramps-25% Down	03/14/2017	\$1,380.00	P
21170076	MATTHEW'S TIRE CENTER-WR	Chev Equinox Oil Change, Rotate Tires	03/14/2017	\$49.99	P
21170077	SWETZ OIL COMPANY	Kerosene for Steam Cleaner-NP	03/14/2017	\$40.09	P
21170078	WPRA	WPRA 2017 Spring Conf.-Chad	03/14/2017	\$85.00	P
21170079	TOWN OF GRAND RAPIDS	Permit for SP Campground Wood Shed	03/16/2017	\$75.00	P
21170080	4-H LEADERS ASSOCIATION	Plat Book for 2017 for Forester	03/16/2017	\$30.00	P
21170081	DOINE EXCAVATING INC	Crushed Gravel for NP	03/23/2017	\$108.00	P
21170082	POWER PAC INC	Oil for Equipment for NP	03/23/2017	\$121.56	P
21170083	RAPIDS RENTAL & SUPPLY	Supplies for SP	03/23/2017	\$181.96	P
21170084	RIESTERER & SCHNELL	JD Tractor Supplies for SP	03/23/2017	\$298.77	P
21170085	ALLIANT ENERGY/ WP&L	Nepco Shelter Electric Service	03/28/2017	\$353.62	P
21170086	FASTENAL COMPANY	Building & Park Supplies	03/28/2017	\$184.67	P
21170087	MENARDS-MARSHFIELD	DP and NP Supplies	03/28/2017	\$92.78	P
21170088	NORTHERN SAFETY CO INC	Ear Muffs & Gloves for Parks	03/28/2017	\$217.65	P
21170089	SHERWIN-WILLIAMS CO THE	Picnic Table Paint for SP	03/28/2017	\$86.09	P
21170090	WOODTRUST BANK NA	Hitch, Ball, Etc.-NP Plow Truck	03/28/2017	\$105.96	P

Committee Report

County of Wood

Report of claims for: PARK & FORESTRY DEPT.

For the period of: MARCH PREPAIDS for (APRIL HIRC)

For the range of vouchers: 21170049 - 21170090

Grand Total:

\$20,639.13

Signatures

Committee Chair:

Committee Member:

Committee Member:

Committee Member:

Committee Member:

Committee Member:

Committee Member:

Committee Member:

Committee Member:



BL ACCT [REDACTED]
WOOD CO PARK & FORESTRY

Account Number: #### #### [REDACTED]

Page 3 of 3

Cardholder Account Summary

DENNIS QUINNELL #### #### [REDACTED]	Payments & Other Credits \$0.00	Purchases & Other Charges \$1,015.21	Cash Advances \$0.00	Total Activity \$1,015.21
---	---------------------------------------	--	-------------------------	------------------------------

Cardholder Account Detail

Trans Date	Post Date	Plan Name	Reference Number	Description	Amount
1.) - 01/23	01/25	PBUS01	24081627024700080475493	EMERGENCY MEDICAL PRODUC 800-5586270 OH	\$108.45 ✓
2.) - 01/25	01/27	PBUS01	24081627026700080477950	EMERGENCY MEDICAL PRODUC 800-5586270 OH	\$64.28 ✓
3.) - 02/01	02/02	PBUS01	24445007033000671054293	TRACTOR SUPPLY #194 WISC RAPIDS WI	\$354.98 ✓
4.) - 02/13	02/14	PBUS01	24431067044083356204844	AMAZON.COM AMZN.COM/BILL AMZN.COM/BILL WA	\$487.50 ✓

Cardholder Account Summary

FRITZ SCHUBERT #### #### [REDACTED]	Payments & Other Credits \$0.00	Purchases & Other Charges \$633.58	Cash Advances \$0.00	Total Activity \$633.58
--	---------------------------------------	--	-------------------------	----------------------------

Cardholder Account Detail

Trans Date	Post Date	Plan Name	Reference Number	Description	Amount
1.) - 01/25	01/27	PBUS01	24610437026010193107963	THE HOME DEPOT #4942 WISC RAPIDS WI	\$120.81 ✓
2.) - 01/26	01/29	PBUS01	24610437027010191853856	THE HOME DEPOT #4942 WISC RAPIDS WI	\$19.98 ✓
3.) - 01/30	02/01	PBUS01	24610437031010187075948	THE HOME DEPOT #4942 WISC RAPIDS WI	\$46.96 ✓
4.) - 01/31	02/02	PBUS01	24610437032010187876658	THE HOME DEPOT #4942 WISC RAPIDS WI	\$395.93 ✓
5.) - 02/16	02/19	PBUS01	24707807048717254876706	TOOL SHED WISCONSIN RAP WI	\$49.90 ✓

- 1.) - Sharps Containers for parks.
- 2.) - Locking wheel brackets for sharps containers.
- 3.) - Fuel Tank for Forestry Technician truck.
- 4.) - Airlines for air compressor through out new DX Shop.

1. - New DX Shop supplies
2. - New DX Shop supplies
3. - New DX Shop supplies
4. - New DX Shop shelving, etc. - Forestry Area
5. - Tools



Cardholder Account Summary

DENNIS QUINNELL #### [REDACTED]	Payments & Other Credits \$0.00	Purchases & Other Charges \$101.96	Cash Advances \$0.00	Total Activity \$101.96
------------------------------------	---------------------------------------	--	-------------------------	----------------------------

Cardholder Account Detail

Trans Date	Post Date	Plan Name	Reference Number	Description	Amount
1) - 03/03	03/05	PBUS01	24445007063000762801894	TRACTOR SUPPLY #194 WISC RAPIDS WI	\$101.96

1.) NP Plow Truck Hitch, Ball, Etc.

Cardholder Account Summary

SANDRA GREEN #### [REDACTED]	Payments & Other Credits \$0.00	Purchases & Other Charges \$4.00	Cash Advances \$0.00	Total Activity \$4.00
---------------------------------	---------------------------------------	--	-------------------------	--------------------------

Cardholder Account Detail

Trans Date	Post Date	Plan Name	Reference Number	Description	Amount
1. - 03/17	03/19	PBUS01	24492157076894588261972	PAYPAL *WOOD COUNTY 402-935-7733 WI	\$2.00
2. - 03/17	03/19	PBUS01	24492157076894588116846	PAYPAL *WOOD COUNTY 402-935-7733 WI	\$2.00

1. - Paypal credit card test for Powers Bluff Project Donations.
2. - Paypal credit card test for anonymous for PB Project Donations.

Additional Information About Your Account

IF IMPOSED, THE MINIMUM FINANCE CHARGE WILL BE \$2.00.

THE ANNUAL PERCENTAGE RATE MAY VARY MONTHLY AND IS CALCULATED BY ADDING 4.9% TO THE INDEX WHICH IS THE PRIME RATE PUBLISHED IN THE MONEY RATES TABLE OF THE WALL STREET JOURNAL.

THE TOTAL FINANCE CHARGE PAID ON YOUR ACCOUNT DURING THE PAST YEAR WAS \$0.00.

ScoreCard Bonus Points Information as of 03/19/2017

SCORECARD	Beginning Balance	Points Earned	Points Adjusted	Points Redeemed	Ending Balance
	10,081	152	0	0	10,233

Finance Charge Summary / Plan Level Information

Plan Name	Plan Description	FCM ¹	Average Daily Balance	Periodic Rate *	Corresponding APR	Finance Charges	Effective APR Fees **	Effective APR	Ending Balance
Purchases									
PBUS01 001	PURCHASE	G	\$0.00	0.72083%(M)	8.6500%(V)	\$0.00	\$0.00	0.0000%	\$105.96
Cash									
CBUS01 001	CASH	A	\$0.00	0.72083%(M)	8.6500%(V)	\$0.00	\$0.00	0.0000%	\$0.00

* Periodic Rate (M)=Monthly (D)=Daily

** includes cash advance and foreign currency fees

¹ FCM = Finance Charge Method

Days In Billing Cycle: 28

APR = Annual Percentage Rate

(V) = Variable Rate If you have a variable rate account the periodic rate and Annual Percentage Rate (APR) may vary.

NOTICE OF BIDS

The Wood County Highway Infrastructure and Recreation Committee will receive sealed bids only (no faxed bids accepted) up until 10:00 AM (CST) on Wednesday, April 5, 2017 at the Highway Commissioner's Office, 555 - 17th Avenue North, Wisconsin Rapids, WI 54495-1966 for furnishing of the following:

The 2017 Requirements of Bituminous Materials

Specifications may be had by applying at the above office.

The Committee reserves the right to reject any or all bids or to accept any bid they deem most advantageous to Wood County.

By Order of the Wood County Highway Infrastructure and Recreation Committee,

A handwritten signature in black ink, appearing to read 'Roland Hawk', is written over the printed name.

Roland Hawk, P.E.
for Douglas J. Passineau, Commissioner

**BIDDING INSTRUCTIONS FOR WOOD COUNTY'S 2017 BITUMINOUS
REQUIREMENTS**

1. ALL BIDS AND PROPOSALS **MUST** be in the office of the County Highway Commissioner, 555 - 17th Avenue North, Wisconsin Rapids, WI 54495, by 10:00 AM (CST) on **Wednesday, April 5, 2017**. Bids must be sealed and properly identified giving the name and address of the bidder and marked "**BID ON BITUMINOUS REQUIREMENTS**". All bids are to be by transport, fob, Wisconsin Rapids plant site, Wisconsin Rapids, WI.
2. Bids will be publicly opened and read at the above listed time by Highway Department personnel. A spreadsheet of the results will be presented to the County Highway Infrastructure and Recreation Committee or its authorized representatives on **Thursday, April 6, 2017** at the Wood County Highway Department.
3. Bidders **MUST** use Wood County's Bid Forms.
4. Bids or proposals will be accepted on six (6) options. Bidders may bid either one or all of these options.

OPTIONS:

Bid "A" – PG 58-34 & PG 58-28 (each with added silicone)	_____	Approximately 4000 Tons
Bid "B" – Emulsified Materials	_____	Gallons
Bid "C" – SC Asphalts	_____	Approximately 50 Tons
Bid "D" – Crackfiller PAF2	_____	Approximately 20 Tons
Bid "E" – Rubberized Joint Filler	_____	
ASTM 3405 Spec	_____	Approximately 40 Tons
Bid "F" – Rubberized Joint Filler (with Fiber)	_____	
ASTM 5167 Spec	_____	Approximately 40 Tons

5. Bid "B" Contractor(s) is responsible for ordering, coordinating, and applying oil deliveries. Wood County shall have the right to cancel loads prior to the scheduled delivery time or return loads due to weather or mechanical break down without penalty or cost to Wood County. Wood County will pay for measured quantities applied on Wood County roads.
6. Bid "D", "E", & "F" will be for one year from the date of acceptance. Bidders **MUST STATE** origin of crude for materials on which they bid.
7. These materials will be tested, and any material that does not meet specifications will be rejected and payment for same will be refused.
8. The quantity measured for payment shall be the "**NET**" tons corrected to a temperature of 60° F by the method hereinafter provided for these types of materials. Materials must be heated to the required temperature when delivered to us. If not, we reserve the right to reject the transport, except on Bid Items "D", "E", and "F".
9. Specify the amount of time to unload shipments; also demurrage for time exceeding allowable waiting time, or a charge for returning a load.
10. Unless otherwise specified, all materials will be ordered by Wood County Highway Department as needed.

11. NO "Certified" check or bond will be necessary with bid, but the successful bidder or bidders may be required to furnish either bond or check.
12. The Committee reserves the right to reject any or all bids, proposals, or options to WAIVE any technicality in any bid, proposal, or option submitted, and to accept any bid, proposal, or option they deem most advantageous to Wood County.

By Order of the Wood County Highway Infrastructure and Recreation Committee,

A handwritten signature in black ink, appearing to read 'Roland Hawk', written over a horizontal line.

Roland Hawk, P.E.
for Douglas J. Passineau, Commissioner

NOTE: Bids submitted are to be comprised of "NOTICE OF BIDS", BIDDING INSTRUCTIONS, SPECIFICATIONS, and PROPOSAL - **AND MUST BE ATTACHED IN THAT ORDER!**

MINIMUM SPECIFICATIONS FOR WOOD COUNTY'S ASPHALT

ALL TYPES and GRADES of materials listed below **MUST** meet the Specifications as shown in the Latest Edition of the State of Wisconsin, Department of Transportation, Division of Highways Manual of Standard Specifications for Road and Bridge Construction "BITUMINOUS MATERIALS".

<u>TYPE</u>	<u>GRADE</u>
PG _____	58-34
PG _____	58-28
<hr/>	
EM _____	CRS-2 & 2P
EM _____	CSS-1H
EM _____	HFE 300 & 1000
<hr/>	
SC _____	250
SC _____	800
SC _____	3,000
SC _____	15,000

PROPOSAL FORM

April 5, 2017

TO: Wood County Highway Infrastructure and Recreation Committee
555 - 17th Avenue North
Wisconsin Rapids, WI 54495-1966

We, the undersigned, propose to furnish to the Wood County Highway Commission, Wisconsin Rapids, WI, the following as herein specified by us in accordance with the NOTICE OF BIDS, BIDDING INSTRUCTIONS, and SPECIFICATIONS hereto attached:

BID	Product	Source of Crude	Price	Unit
A	PG 58-34*			per ton FOB Wood Co.
	PG 58-28*			per ton FOB Wood Co.
B	CRS-2			per gallon applied Wood Co.
	CRS-2P			per gallon applied Wood Co.
	CSS-1H			per gallon FOB Wood Co.
	HFE-300			per gallon FOB Wood Co.
	HFE-1000			per gallon FOB Wood Co.
C	SC Asphalts			per gallon FOB Wood Co.
D	PAF 2			per lb. FOB Wood Co.
E	Joint Filler ASTM 3405			per lb. FOB Wood Co.
F	Joint Filler (with Fiber) ASTM 5167			per lb. FOB Wood Co.

*Bid PG 58-34 & PG 58-28 with silicone added

Quotes per gallon will not be considered for any material other than emulsions!

UNLOADING TIME: (1) Time Allowed _____

(2) Charge After Time Limit EXPIRES _____

(3) Haul-back charge, if any _____

By submission of this bid, we understand that unless otherwise specified in the bid requirements, all materials will be ordered on an "as needed" basis by the Wood County Highway Department.

COMPANY NAME OF BIDDER _____

REPRESENTATIVE _____

TITLE _____

ADDRESS _____

PHONE NO. / CELL _____

E-MAIL _____

NOTICE OF BIDS

The Wood County Highway Infrastructure and Recreation Committee will receive sealed bids only (no faxed bids accepted) up until 10:00 AM (CST) on Wednesday, April 5, 2017 at the Highway Commissioner's Office, 555 - 17th Avenue North, Wisconsin Rapids, WI 54495-1966 for furnishing of the following:

2017 Chemical Warm Mix and Compaction Aid Additive

Specifications may be had by applying at the above office.

The Committee reserves the right to reject any or all bids or to accept any bid they deem most advantageous to Wood County.

By Order of the Wood County Highway Infrastructure and Recreation Committee,

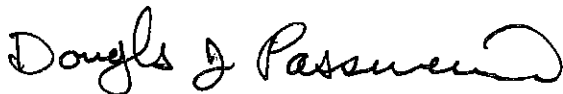
A handwritten signature in black ink, appearing to read "Doug J. Passineau", with a stylized flourish at the end.

Douglas J. Passineau
Wood County Highway Commissioner

BIDDING INSTRUCTIONS FOR WOOD COUNTY'S 2017 CHEMICAL WARM MIX AND
COMPACTION AID ADDITIVE

1. ALL BIDS AND PROPOSALS **MUST** be in the office of the County Highway Commissioner, 555 - 17th Avenue North, Wisconsin Rapids, WI 54495, by 10:00 AM (CST) on **Wednesday, April 5, 2017**. Bids must be sealed and properly identified giving the name and address of the bidder and marked "BID ON CHEMICAL WARM MIX AND COMPACTION AID ADDITIVE". All bids are to be by transport, fob, Wisconsin Rapids plant site, Wisconsin Rapids, WI.
2. Bids will be publicly opened and read at the above listed time by Highway Department personnel. A spreadsheet of the results will be presented to the County Highway Infrastructure and Recreation Committee or its authorized representatives on **Thursday, April 6, 2017** at the Wood County Highway Department.
3. Bidders **MUST** use Wood County's Bid Forms.
4. Bids will be for one year from the date of acceptance. Bidders **MUST STATE** origin of crude for materials on which they bid.
5. These materials will be tested, and any material that does not meet specifications will be rejected and payment for same will be refused.
6. Specify the amount of time to unload shipments; also demurrage for time exceeding allowable waiting time, or a charge for returning a load.
7. Unless otherwise specified, all materials will be ordered by Wood County Highway Department as needed.
8. NO "Certified" check or bond will be necessary with bid, but the successful bidder or bidders may be required to furnish either bond or check.
9. The Committee reserves the right to reject any or all bids, proposals, or options to WAIVE any technicality in any bid, proposal, or option submitted, and to accept any bid, proposal, or option they deem most advantageous to Wood County.

By Order of the Wood County Highway Infrastructure and Recreation Committee,



Douglas J. Passineau
Wood County Highway Commissioner

NOTE: Bids submitted are to be comprised of "NOTICE OF BIDS", BIDDING INSTRUCTIONS, SPECIFICATIONS, and PROPOSAL - **AND MUST BE ATTACHED IN THAT ORDER!**

MINIMUM SPECIFICATIONS FOR CHEMICAL WARM MIX AND COMPACTION AID
ADDITIVE

1. Low Viscosity Water-Free Surfactant liquid form
2. Proven performance history with Wisconsin aggregates
3. Production temperature of 250 degrees F or less
4. Placement temperature of 235 degrees F or less
5. Compaction temperature range down to 150 degrees
6. Product must appear on the WisDOT's approved products list for warm mix additives
7. Additive is post added via pump system at Wood County Hot Mix Plant
8. Proven history of successful performance and compatibility with Wood County aggregate source
9. Additive shall be capable of producing Tensile Strength Ratio (ASTM D4827, WisDOT) 80% or higher at manufacturers recommended dosage rate
10. Product delivery of material will be 1 or 2 totes at a time upon request by Wood County
11. Empty totes must be picked up and removed by provider
12. Bid is for approximately 18 tons of material, more or less.

PROPOSAL FORM

April 5, 2017

TO: Wood County Highway Infrastructure and Recreation Committee
555 - 17th Avenue North
Wisconsin Rapids, WI 54495-1966

We, the undersigned, propose to furnish to the Wood County Highway Commission, Wisconsin Rapids, WI, the following as herein specified by us in accordance with the NOTICE OF BIDS, BIDDING INSTRUCTIONS, and SPECIFICATIONS hereto attached:

Chemical Warm Mix and Compaction Aid additive **per ton**: \$ _____ . _____

By submission of this bid, we understand that unless otherwise specified in the bid requirements, all materials will be ordered on an "as needed" basis by the Wood County Highway Department.

COMPANY NAME OF BIDDER _____

REPRESENTATIVE _____

TITLE _____

ADDRESS _____

PHONE NO. / CELL _____

E-MAIL _____

NOTICE OF QUOTES

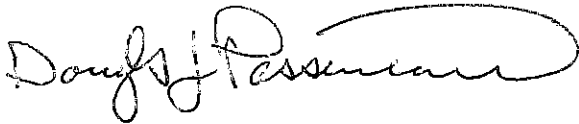
The Wood County Highway Infrastructure and Recreation Committee will accept sealed quotes only (no faxed quotes accepted) up until 10:00 AM (CST) on Wednesday, April 5, 2017 at the Highway Commissioner's Office, 555 - 17th Avenue North, Wisconsin Rapids, WI 54495-1966 for the furnishing and delivering of the following:

Department's Requirements of Milling and Pulverizing Wood County Highways for 2017, approximate quantities are 158,200 SY of milling 2 inches, and 268,770 SY of pulverizing approximately 4 – 8 inches full depth.

Specifications, Quoting Procedure and Forms may be had by applying at the above office.

The Committee reserves the right to reject any or all quotes or to accept any quote they deem most advantageous to Wood County.

By Order of the Wood County Highway Infrastructure and Recreation Committee:

A handwritten signature in black ink, appearing to read "Douglas J. Passineau". The signature is fluid and cursive, with a large loop at the end.

Douglas J. Passineau
Wood County Highway Commissioner

GENERAL QUOTING PROCEDURE

QUOTE OPENING: April 5, 2017 at the Wood County Highway Department, 10:00 AM (CST)

To comply with the NOTICE OF QUOTES, the following General Quoting Procedure and Specifications are to govern:

All quotes must be in the Office of the County Highway Commissioner, 555 - 17th Avenue North, Wisconsin Rapids, WI by 10:00 AM (CST), Wednesday, April 5, 2017. Quotes must be sealed and properly identified giving the name and address of the quoter. Each quote must be in a separate container or envelope and marked **QUOTE ON MILLING AND PULVERIZING**. All quotes will be publicly opened and read at the Wood County Highway Department at 10:00 AM (CST), Wednesday, April 5, 2017 by the County Highway Infrastructure and Recreation Committee or its authorized representatives and only TOTAL quotes will be read.

All quotes must be entered and submitted on the specified form of Proposal prepared by the Highway Commission and only quotes submitted on these forms will be considered for award purposes by the Commissioner. The General Quoting Procedure, Specifications and Proposal shall constitute the quote of each quoter and must be attached in the above order. Quoters shall attach such additional information to their proposal as they deem advisable and necessary for the benefit of the Committee in assembling comparative specifications.

No Certified Cashier's checks or Bidder's Bonds will be required with quote, but quoter must submit satisfactory evidence of ability to make delivery of the equipment as specified and as agreed to by both parties. The successful quoter will not be required to deposit a "CERTIFIED" check to guarantee delivery of same on or before specified date.

The Committee reserves the right to consider all proposals for a period not to exceed sixty (60) days from the date of opening. Each contractor will be allowed to have a representative appear before the Committee to explain his quote and specifications of the product as quoted. A time limit for each quoter will be established by the Committee at the day of letting. This request for quotes does not guarantee work to the contractor with the lowest quote. Wood County intends to honor the low quote and if the contractor with the lowest quote is not able to perform the work in time frame Wood County schedules the work, then Wood County has the choice to select the second lowest quote contractor, and so forth.

The Wood County Highway Infrastructure and Recreation Committee reserves the right to reject any or all quotes or parts, thereof and to WAIVE any technicality in any quote submitted and to make such award as they deem most advantageous to Wood County.

By Order of the Wood County Highway Infrastructure and Recreation COMMITTEE:



Douglas J. Passineau
Wood County Highway Commissioner

DEPARTMENT'S REQUIREMENTS OF MILLING AND PULVERIZING FOR 2017

REQUEST FOR SEALED QUOTES

Work includes the following:

Pulverizing Full Depth Approximately 324,770 S.Y. Asphalt Pavement
83,075 SY at approximately 4-inches
120,000 SY at approximately 6-inches
65,695 SY at approximately 8-inches

Milling 2" Approximately 158,200 S.Y. Asphalt Pavement
Milling 3" Approximately YTBD* S.Y. Asphalt Pavement

The following special provisions apply for pulverizing:

1. General. All materials and workmanship must be in accordance with Wisconsin Department of Transportation, Division of Highways Standards and Specifications. The existing asphalt surface shall be pulverized full depth and to a minimum of 97 percent passing a 2-inch screen. The depth of the pulverizing shall be adequate to ensure a sufficient depth of the existing crushed aggregate base course shall also be pulverized and mixed with the asphalt material.
2. Measurement. Pulverized asphalt pavement and base course will be measured by the square yard of existing asphalt surface.
3. Payment. Pulverized asphalt pavement and base course will be paid at the contract unit price per square yard which shall be full compensation for pulverizing and all labor, tools, equipment, and incidentals necessary to complete the work in accordance with the contract.
4. Wood County shall provide all shaping and traffic control.
5. The contractor shall furnish to Wood County Highway Department a Certificate of Insurance for Worker's Compensation and an Umbrella Certificate of Liability and Property Insurance in the minimum amount of one million dollars, (\$1,000,000.00) before beginning work and shall notify Wood County Highway Department of and changes or cancellations in insurance coverage.
6. Wood County Highway hours of operation from April 24, 2017 to September 1, 2017 is 6:00 AM – 4:00 PM Monday – Thursday. Only with permission from the Highway Commissioner or County Engineer will work be performed on days outside these hours of operation. The Highway Department can extend the hours Monday – Thursday in most cases to meet the contractor's needs. Work on Friday, Saturday, Sunday and Holidays will be approved on a case by case basis. Contractors should not count on working Fridays.
7. Tentative date of contract award is April 10, 2017.
8. Tentative start date May 1, 2017 or possibly sooner depending on weather.

*YTBD – Yet to be determined.

The following special provisions apply for milling:

1. General. All materials and workmanship must be in accordance with Wisconsin Department of Transportation, Division of Highways Standards and Specifications. The existing asphalt surface shall be milled as directed by the engineer.
2. Measurement. The removal of asphalt pavement by milling will be measured by the square yard of existing asphalt surface.
3. Payment. The removal of asphalt pavement by milling will be paid at the contract unit price per square yard which shall be full compensation for milling and all labor, tools, equipment, and incidentals necessary to complete the work in accordance with the contract.
4. Wood County shall provide trucking for asphalt milling and traffic control.
5. Wood County will retain ownership of all asphalt milling material.
6. The contractor shall furnish to Wood County Highway Department a Certificate of Insurance for Worker's Compensation and an Umbrella Certificate of Liability and Property Insurance in the minimum amount of one million dollars, (\$1,000,000.00) before beginning work and shall notify Wood County Highway Department of and changes or cancellations in insurance coverage.
7. Wood County Highway hours of operation from April 24, 2017 to September 1, 2017 is 6:00 AM – 4:00 PM Monday – Thursday. Only with permission from the Highway Commissioner or County Engineer will work be performed on days outside these hours of operation. The Highway Department can extend the hours Monday – Thursday in most cases to meet the contractor's needs. Work on Friday, Saturday, Sunday and Holidays will be approved on a case by case basis. Contractors should not count on working Fridays.
8. Tentative date of contract award is April 10, 2017.
9. Tentative start date May 1, 2017 or possibly sooner depending on weather.

The following are the proposed projects in Wood County to be milled &/or pulverized: (Quantities in Square Yards)
Wood County has the right to vary the quantity based on field conditions.

					Mill 2"	Mill 3"	Pulv 4"	Pulv 6"	Pulv 8"
CTH B	US 10 - CTH BB	Pulverize Full Depth (6"-8")	2.0	MILES				12,900	14,080
CTH C	CTH F - STH 34	Pulverize Full Depth (4")	5.9	MILES			83,075		
CTH E	STH 73 - CTH C	Pulverize Full Depth (8")	2.0	MILES					25,815
CTH E	CTH C - CTH N	Mill 2" Pulverize Full Depth (6")	5.0+/-	MILES	64,000			51,600	
CTH K	US 10 - CTH H	Mill 2" Pulverize Full Depth (6")	2.3	MILES	29,700			29,700	
CTH V	CTH Y - NCL	Mill 2"	1	MILES	12,900				
CTH Y	CTH M - CTH H)	Mill 2" Pulv. Full Depth (6" - 8")	4	MILES	51,600			25,800	25,800

There may be additional local government projects, but it is unknown at this time how many S.Y.

DEPARTMENT'S REQUIREMENTS OF MILLING AND PULVERIZING FOR 2016

April 5, 2017

TO: Wood County Highway Infrastructure and Recreation Committee
555 – 17th Avenue North
Wisconsin Rapids, WI 54495-1966

We, the undersigned, propose to furnish to the Wood County Highway Commission, Wisconsin Rapids, WI the following as herein specified by us in accordance with the Notice of Quotes, Bidding Procedure and Specifications hereto attached:

Department's Requirements for 2017 of:

Milling 2-inches	\$ _____ per S.Y.
Milling 3-inches	\$ _____ per S.Y.
Milling 4-inches	\$ _____ per S.Y.
Milling Mobilization -- To the County	\$ _____
Milling Mobilization -- From Project to Project	\$ _____
Pulverizing 4-inches	\$ _____ per S.Y.
Pulverizing 6-inches	\$ _____ per S.Y.
Pulverizing 8-inches	\$ _____ per S.Y.
Pulverizing Mobilization -- To the County	\$ _____
Pulverizing Mobilization -- From Project to Project	\$ _____

COMPANY NAME OF BIDDER _____

REPRESENTATIVE _____

TITLE _____

ADDRESS _____

PHONE NO. / CELL _____

E-MAIL _____

COLD IN-PLACE RECYCLING (CIR)

PROJECT NUMBER 2017-72-06

CTH S

USH 10 – CTH H

Town of Milladore

Wood County, Wisconsin

&

PROJECT NUMBER 2017-72-07

CTH V

Yellow River Bridge – North County Line

Town of Lincoln

Wood County, Wisconsin

PREPARED BY: _____

Wood County Highway Department
555 17th Avenue North
Wisconsin Rapids, WI 54495
Office: (715) 421-8875
Fax: (715) 421-8874

Table of Contents

Article	Description	Page #
	ADVERTISEMENT FOR BIDS	5
	GENERAL BIDDING PROCEDURE, REQUIREMENTS AND CONDITIONS	6
	PAYMENT BOND (SAMPLE)	8
	NOTICE OF AWARD.....	9
	CONTRACT FOR ROAD CONSTRUCTION.....	10
	1.DESCRPTION OF THE WORK.....	10
	2.PRELIMINARY SUBMITTALS; NOTICE TO PROCEED.....	10
	3.PERFORMANCE; SAFETY.	10
	4.COMPLETION DATE.	11
	5.PAYMENT FOR THE WORK.	11
	6.LIQUIDATED DAMAGES.....	11
	7.DELAY.....	11
	8.SUSPENSION OF THE WORK.....	11
	9.CHANGES IN WORK.....	11
	10.TERMINATION FOR DEFAULT.....	11
	11.TERMINATION FOR CONVENIENCE.....	12
	12.QUALIFICATIONS.	12

13.REMOVAL OF EMPLOYEES.....	12
14.LIST OF PARTIES EXCLUDED.....	12
15.INSURANCE.	12
16.BONDING.....	13
17.EXCLUSION OF CONSEQUENTIAL DAMAGES.....	13
18.WARRANTY.....	13
19.RECORDS, MONITORING AND REPORTING.....	13
20.COMPLIANCE WITH LOCAL, STATE AND FEDERAL LAW.....	13
21.DISPUTES.....	14
22.NOTICE.....	14
23.RELATIONSHIP OF PARTIES.....	14
24.INDEMNIFICATION.....	14
25.CHOICE OF LAW.....	14
26.SUCCESSORS AND ASSIGNMENTS.....	14
27.FORCE MAJEURE.....	14
28.SEVERABILITY.....	15
29.AUTHORITY.....	15
30.ENTIRE AGREEMENT; AMENDMENT.	15
31.COUNTERPARTS.....	15
SPECIAL PROVISIONS.....	16
1)General.....	16

2)Scope of Work.	16
3)Prosecution and Progress.....	16
4)Certificate of Insurance.....	17
5)Traffic	17
6)Holiday Work Restrictions.....	17
7)Utilities.	17
8)Liquidated Damages	17
9)Cold-In-Place Recycled Asphalt Pavement.....	17
PROPOSAL FOR COUNTY HIGHWAY S & V COLD IN-PLACE RECYCLING	25

ADVERTISEMENT FOR BIDS

PROJECT NUMBERS 2017-72-06 & 07 **COLD IN-PLACE RECYCLING (CIR)** **COUNTY HIGHWAY S & V** **WOOD COUNTY, WISCONSIN**

Plans and Specifications for the County Highway V CIR Project are available at the Wood County Highway Department, 555 17th Avenue North, Wisconsin Rapids, WI 54495 for a nonrefundable fee of \$20.00 per set, or bidders may obtain a copy by contacting the Wood County Highway Department at (715) 421-8875 (between the hours of 7:00 AM and 3:00 PM, Monday through Friday), with a valid email address and a pdf can be sent to bidders. Wood County Highway Department does not accept responsibility for incomplete or non-deliverable emails.

Approximately:

PROJECT 2017-72-06 CTH S

32,250 Square Yards (by 3-inches) of Cold In-place recycling pavement partial depth

PROJECT 2017-72-07 CTH V

14,000 Square Yards (by 3-inches) of Cold In-place recycling pavement partial depth

It is anticipated that another 10,500 SY of CIR will be included on Lake Avenue in the Town of Grand Rapids. At time this is published the town is deciding on level of improvement for Lake Avenue.

PREQUALIFICATION OF BIDDERS

BIDDER may be asked to submit evidence of BIDDER's qualifications to do this type of work in the state of Wisconsin prior to the award of the contract. Bids will not be accepted from any BIDDER listed on Wood County or the State of Wisconsin Disapproved, Suspended, and Debarred Contractors list or the Federal Excluded Parties List.

SUBMITTAL OF BIDS

Bidders shall submit bids in a separate sealed envelope for the contract to the Wood County Highway Department, 555 17th Avenue North, Wisconsin Rapids, WI 54495. Bids will be received during regular office hours until 10:00 AM local time, Wednesday, April 5, 2017.

The bids will be opened following the closing of the bidding at 10:00 AM local time, Wednesday, April 5, 2017 at Wood County Highway Department, 555 17th Avenue North, Wisconsin Rapids, WI 54495.

By Order of the Wood County Highway Infrastructure and Recreation Committee:

Douglas J. Passineau
Wood County Highway Commissioner

GENERAL BIDDING PROCEDURE, REQUIREMENTS AND CONDITIONS

BID OPENING: April 5, 2017

10:00 A.M. (CST)

To comply with the NOTICE OF BIDS, the following General Bidding Procedure and Specifications are to govern:

All bids must be in the Office of the County Highway Commissioner, 555- 17th Avenue North, Wisconsin Rapids, WI by 10:00 A.M. (CST), Wednesday, April 5, 2017. Bids must be sealed and properly identified giving the name and address of the bidder. Each bid must be in a separate container or envelope and marked **BID Cold In-Place Recycled Asphalt Pavement**. All bids will be publicly opened and read at the specified time by the County Highway Infrastructure and Recreation Committee or its authorized representatives and only TOTAL bids will be read.

All bids must be entered and submitted on the specified form of Proposal prepared by the Highway Commission and only bids submitted on these forms will be considered for award purposes by the Commissioner. The General Biding Procedure, Requirements and Conditions, Specifications and Proposal shall constitute the bid of each bidder and must be attached in the above order. Bidders shall attach such additional information to their proposal, as they deem advisable and necessary for the benefit of the Committee in assembling comparative specifications.

A Bid Bond or Cashier's Check in the amount of 5% of the contract is required for this project and shall be submitted with the Contract Proposal.

The Contractor submitting Bids, referred to as the Contractor, declares that they understand that the estimate of quantities in the attached schedule is approximate only and that the attached quantities may be greater or less in accordance with the specifications.

The Contractor agrees to perform the said work, for and in consideration of the payment of the amount becoming due on account of work performed, according to the unit prices submitted in the bid, and to accept such amounts in full payment of said work.

The Contractor declares that all of the said work will be performed at their own proper cost and expense, that they will furnish all necessary materials, labor, tools, machinery, apparatus, and other means of construction in the manner provided in the applicable specifications and the approved plans for the work together with all standard and special designs that may be designed on such plans, and the special provisions in the contract of which this proposal will become a part, if and when accepted. The Contractor further agrees that the applicable specifications and all plans and working drawings are made part hereof, as fully and completely as if attached hereto.

The Committee reserves the right to consider all proposals for a period not to exceed thirty (30) days from the date of opening. The Committee will either award the contract or reject all bids within that time. Each Contractor will be allowed to have a representative appear before the Committee to explain his bid and specifications of the product as bid. A time limit for each Contractor will be established by the Committee at the day of letting.

The Contractor, if awarded the contract, agrees to begin work not later than ten (10) days after the date of written notification from the engineer to do so, unless otherwise stipulated in the special provisions.

The Wood County Highway Infrastructure and Recreation Committee reserves the right to reject any or all bids or parts, thereof and to WAIVE any technicality in any bid submitted and to make such award as they deem most advantageous to Wood County.

By Order of the Wood County Highway Infrastructure and Recreation Committee:

Douglas J. Passineau
Wood County Highway Commissioner

Payment Bond (sample)

Any singular reference to the Contractor, Surety, Owner or other party shall be considered plural where applicable.

CONTRACTOR (Name and Address):

SURETY (Name and Principal Place of Business):

OWNER (Name and Address):

CONTRACT

Date:

Amount:

Description (Name and Location):

BOND

Date (Not earlier than Construction Contract Date):

Amount:

Modifications to this Bond Form:

Surety and Contractor, intending to be legally bound hereby, subject to the terms printed on the reverse side hereof, do each cause this Payment Bond to be duly executed on its behalf by its authorized officer, agent, or representative.

CONTRACTOR AS PRINCIPAL

Company: (Corp. Seal)

Signature: _____

Name and Title:

SURETY

Company: (Corp. Seal)

Signature: _____

Name and Title:

(Attach Power of Attorney)

CONTRACTOR AS PRINCIPAL

Company: (Corp. Seal)

Signature: _____

Name and Title:

SURETY

Company: (Corp. Seal)

Signature: _____

Name and Title:

NOTICE OF AWARD

PROJECT NUMBERS 2017-72-06 & 07
COLD IN-PLACE RECYCLING (CIR)
COUNTY HIGHWAY S & V
WOOD COUNTY, WISCONSIN

Dated: _____

To: _____

To Whom It May Concern:

You are notified that your Bid Proposal dated _____ for the above Contract has been considered. You are the apparent successful bidder and have been awarded a contract for the, "COLD IN-PLACE RECYCLING (CIR) COUNTY HIGHWAY S & V, WOOD COUNTY, WISCONSIN," project.

The Contract Price of your contract is \$ _____.

Three copies of each of the proposed Contract Documents, including the Plans, will be forwarded from WOOD COUNTY following this Notice of Award.

You must comply with the following conditions within ten (10) days of the date of this Notice of Award, that is by: _____.

1. You must deliver to the Owner three fully executed counterparts of the Agreement, including all the Contract Documents. Each of the Contract Documents must bear your signature on the Agreement Form.

Include Certificate of Insurance naming WOOD COUNTY as additional insured.
2. Provide anticipated start date.
3. Agree to complete the work between May 15, 2017 – June 30, 2017.

Failure to comply with these conditions within the time specified will entitle the Owner to consider your bid abandoned, and to annul this Notice of Award or issue liquidated damages.

Within ten days after you comply with those conditions, the Owner will return to you one fully signed counter part of the Agreement with the Contract Documents attached.

CONTRACT FOR ROAD CONSTRUCTION

PROJECT NUMBERS 2017-72-06 & 07 **COLD IN-PLACE RECYCLING (CIR)** **COUNTY HIGHWAY S & V** **WOOD COUNTY, WISCONSIN**

THIS AGREEMENT (the "Contract") is made effective as of this ____ day of _____, 2017, by and between the Wood County Highway Department ("Client") and ("Contractor") for the construction of road and bridge project activities on Wood County Highway S and V (Project ID No. 2017-72-06 & 2017-72-07).

NOW, THEREFORE, the parties agree as follows:

1. DESCRIPTION OF THE WORK.

Work under this contract shall consist of cold in-place recycled asphalt pavement, milling existing asphalt pavement, processing and mixing RAP with an asphalt stabilizing agent and water (if required) and placing and compacting the mixture for Wood County Highway (County), and all incidental items necessary to complete the work as shown on the plans and included in the proposal and contract..

2. PRELIMINARY SUBMITTALS; NOTICE TO PROCEED.

Prior to the commencement of any work hereunder and the issuance of the Notice to Proceed, Contractor shall prepare and submit to Client such schedules, plans and other documents as may be needed by Client in order to satisfy its obligations under the Contract, including but not limited to a progress schedule, safety plan, accident prevention plan and subcontractor plan.

3. PERFORMANCE; SAFETY.

Contractor shall perform the Work in a diligent, efficient and skillful manner. Contractor's Work shall not interfere with, hinder or delay other work on the Project. In the event Contractor delays the progress of any other work on the Project, Contractor shall take prompt corrective action, without additional compensation, and shall be liable to and reimburse Client for all damages resulting from such delay. Contractor shall be solely responsible for protection of its Work and for loss or damage to materials, tools, equipment, or other property, owned, rented or used by Contractor in performance of the Work. If performance of the Work depends upon performance of other work, Contractor shall carefully examine all related work, determine whether it is suitable for performance of the Work, report immediately any unsuitable conditions to Client in writing, and allow Client reasonable time to have such unsuitable conditions remedied. Unless Contractor reports such unsuitable conditions, Contractor shall be deemed to have accepted related work as adequate for completion of the Work. Contractor shall carry out the Work in a safe manner, and shall comply with all safety measures initiated by Contractor or required by the Contract, and all applicable laws, codes, ordinances, rules, regulations and orders of any public authority for the safety of persons or property. Contractor shall be solely responsible for protection of the safety of its employees.

4. COMPLETION DATE.

The Work shall be completed between 6:00 AM MAY 15, 2017 and 5:00 PM FRIDAY, JUNE 30, 2017. Time is of the essence for the performance of the Work.

5. PAYMENT FOR THE WORK.

In exchange for the Contractor's performance of the Work, Client will pay Contractor the total firm-fixed price amount of \$_____.

All funds are subject to availability from the Client. Final payment will be issued only upon satisfactory completion of the Work and all other obligations due under this Contract. Client will have no liability for payment for any work performed by Contractor that is not covered in this Contract or that is not approved in writing by Client. Notwithstanding any other provisions of this Contract, failure of Contractor to submit required or necessary reports when due, failure to perform the Work as and when required, will result in withholding of payments under this Contract.

6. LIQUIDATED DAMAGES

Contractor shall pay Client \$500.00 for each day that expires after 5:00 PM FRIDAY, JUNE 30, 2017 that CTH S and V CIR surface is not open to traffic.

7. DELAY.

In the event that Contractor's Work is delayed for any reason, including suspension by Client, Contractor's sole remedy shall be an extension of time equal to the period of delay. Contractor shall not be entitled to any extension for delays attributable to its own acts or omissions or occurrences under its control.

8. SUSPENSION OF THE WORK.

Client shall have the same right to suspend the performance of the Work, or any portion thereof, under the Contract, and Contractor's right to compensation shall also be governed thereby.

9. CHANGES IN WORK.

Client shall have the right to make changes in the Work in writing, and Contractor shall perform the Work as changed, subject to an equitable adjustment in price and/or time for performance, if applicable, provided Contractor provides written notice of such request for equitable adjustment within ten (10) days of receipt of the change. Contractor shall make no changes in the Work without written direction from Client, and Contractor shall not be compensated for any change made without such written direction.

10. TERMINATION FOR DEFAULT.

In the event Contractor fails to comply with any of its obligations hereunder or fails to prosecute or properly perform the Work to Client's reasonable satisfaction, and Contractor further fails to take corrective action satisfactory to Client within three (3) working days from receipt of Client's written notice specifying the deficiency in Contractor's performance, Client shall have the right to terminate the Work, or any portion thereof, for cause and take whatever steps it deems necessary to correct said failure and charge the full cost of corrective action to Contractor (including reasonable overhead, profit and attorneys' fees).

11. TERMINATION FOR CONVENIENCE.

Client shall have the right at any time and for any reason to terminate the Work, or any portion of the Work, for its convenience. In the event of termination for convenience by Client, Client's liability to Contractor shall be limited to payment of amounts recoverable under the Termination for Convenience clause of the Contract.

12. QUALIFICATIONS.

Contractor shall ensure that personnel selected to perform or manage the Work are qualified in accordance with generally accepted professional standards of the industry. Architects, engineers, surveyors and other related design and construction professionals and related trade and craft practitioners shall be licensed under applicable law or work under the direction of licensed engineers, architects and surveyors, and meet appropriate qualifications and experience requirements for the type of work involved.

13. REMOVAL OF EMPLOYEES.

Contractor shall remove from the Work at the project site any employee thereof whom the Client, in writing, finds to be incompetent, careless or otherwise objectionable.

14. LIST OF PARTIES EXCLUDED.

Contractor is ineligible for the award of this Contract if Contractor is listed on State of Wisconsin Disapproved, Suspended, and Debarred Contractors list or the Federal Excluded Parties List, Contractor shall provide Contractor with "Certification Regarding Debarment, Suspension, Proposed Debarment, and Other Responsibility Matters." In the event of Contractor's noncompliance with the requirements hereunder, Contractor may take appropriate action, including, but not limited to termination of this Contract.

15. INSURANCE.

All prime contractors shall provide a Certificate of Insurance on forms acceptable to the Client. All Subcontractors shall provide and carry at a minimum, the insurance coverage and limits as indicated in the General Conditions or as required by the Contractor, whichever is higher. This shall be submitted to the Client before a Contract is signed.

The Client (Wood County) shall be named as additional insured on the Certificates of Insurance. General liability insurance shall cover property damage to existing buried utilities. Contractor shall secure, pay premiums for, and keep in force until the expiration of the Contract, or any renewal thereof, the following insurance: (1) Worker's Compensation Insurance, as required by the laws of the State of Wisconsin; (2) Owner's landlord's and tenant's bodily injury liability insurance with limits of not less than \$1,000,000 for each person, and \$5,000,000 for each accident; (3) Property Damage Liability Insurance with limits of not less than \$500,000 for each accident and a total limit of \$1,000,000 for damages arising out of bodily injuries to or death of two persons in any one accident. Other insurance not specifically mentioned herein when required by law or other regulations. Each insurance company of Contractor must hold a current Certificate of Authority issued by the Director of the State Department of Insurance authorizing it to transact the appropriate kind of insurance business in State. To be acceptable, the policy of insurance must contain a provision committing the insurer to pay for covered acts and omissions regardless of the fact that the same acts or omissions by Contractor, its agents and employees may be covered under the Federal Tort Claims Act. Each policy of insurance shall contain an endorsement providing that cancellation by the insurance company shall not be effective unless a copy of the cancellation is mailed (registered) to the appropriate official of Contractor at least 30 days before the effective date of the cancellation notice received, immediately upon receipt. A certificate of each policy of insurance and any

changes therein, shall be furnished to Client immediately upon receipt from the insurance company. Insurance companies of Contractor must be satisfactory to the Client. When in Client's opinion an insurance company is not satisfactory for reasons stated in writing, Client may recommend Contractor obtain insurance through companies, which Client deems satisfactory.

16. BONDING.

Contractor shall provide a bid bond of 5% when bids are submitted, and performance and payment bonds equal to 100% of the amount of the Contract at the time of Contract execution. Bonds are to be made payable to Client. Corporate sureties offered for bonds furnished with this Contract must be original documents and must appear on the list contained in the Department of Treasury Circular 570, entitled "Companies Holding Certificates of Authority as Acceptable Sureties on Federal Bonds and Acceptable Reinsuring Companies".

17. EXCLUSION OF CONSEQUENTIAL DAMAGES.

Notwithstanding any other provision of the Contract, Client shall not have any liability hereunder for incidental, consequential, special or punitive damages, including but not limited to lost profits, loss of good will, or business interruption, even if Client has been advised of the possible existence of such damages.

18. WARRANTY.

Contractor warrants the Work is free of deficiencies and defects in materials and/or workmanship and that the Work conforms in all respects to the requirements of this Contract, and any other applicable contract documents. Contractor agrees to satisfy such warranty obligations without cost to Client.

19. RECORDS, MONITORING AND REPORTING.

Contractor shall maintain a record keeping system and, upon reasonable advance request, provide reasonable access to such records by Client. At a minimum, such records shall include completed daily reports of construction activities appropriate to the type of construction being performed. Contractor shall be responsible for managing the day-to-day operations conducted under this Contract and for monitoring activities conducted to ensure compliance with the Contract and applicable State and Federal requirements. With respect to the monitoring activities of Contractor, the monitoring visits/inspections shall include those jointly determined to be necessary to ensure compliance with the Contract, including structural integrity of the project and compliance with safety, health, and environmental standards or requirements. Prior to beginning of construction, Client and Contractor will agree upon the process for monitoring the project activities. Contractor shall maintain on the job-site or project office, and make available to Client during monitoring visits, contracts, subcontracts, modifications, construction documents, change orders, shop drawings, equipment cut sheets, inspection reports, testing reports, and current redline drawings.

20. COMPLIANCE WITH LOCAL, STATE AND FEDERAL LAW.

In the performance of the Work, Contractor shall give all notices and comply with all applicable local, state and federal laws, executive orders and regulations. Unless otherwise exempt, the following clauses are incorporated by reference: Equal Opportunity Clause, 41 CFR § 60 1.4; Disabled Veterans and Veterans of the Vietnam Era, 41 CFR § 60 250.5; Individuals with Disabilities, 41 CFR § 60 741.5. In addition, unless exempt, Contractor shall comply with all affirmative action requirements and any other requirements set forth in 41 CFR Chapter 60 and all applicable Executive Orders pertaining to equal opportunity. Contractor also agrees to comply with Executive Order 13201 and its implementing regulation at 29 CFR Part 470.

21. DISPUTES.

With respect to any dispute or claim hereunder, Contractor agrees to be bound to Client by a final decision of a Contracting Officer, board of contract appeals or other court whether or not Contractor is a party to such proceedings. Contractor agrees to assert any claim it may have relating to the Contract through Client and to allow adequate time for the exhaustion of all remedies under the Contract. Provided Contractor's claim is not barred by the foregoing provisions, such claim shall be resolved pursuant to the Choice of Law provision below.

22. NOTICE.

Any notice or communication required or permitted under this Contract shall be sufficiently given if delivered in person or by certified mail, return receipt requested, to the primary business address of the other party or to such other address as a party may have furnished to the other in writing.

23. RELATIONSHIP OF PARTIES.

The parties to this Contract agree that Contractor is an independent business/person or corporation, and that the relationship created by this Contract is that of Independent Contractor. No agent, employee, or servant of Contractor shall be or shall be deemed to be the employee, agent or servant of Client. Contractor is not authorized to bind Client to any agreement or act on behalf of Client in anyway; other than to perform the Work, and shall not represent to any person or otherwise purport to be so authorized.

24. INDEMNIFICATION.

Contractor shall indemnify and hold Client harmless from any claims, actions, and liabilities, including but not limited to attorneys' fees and costs, arising from any breach of this Contract by Contractor, or otherwise arising out of or relating to Contractor's performance of the Work, except to the extent caused by the wrongful act or gross negligence of an employee or other agent of Client.

25. CHOICE OF LAW.

This Contract shall be construed under the laws of the Wood County in the State of Wisconsin. The Parties agree, for any claim or suit or other dispute relating to this Agreement that cannot be mutually resolved, the venue shall be in the Circuit Court of Wood County, and the parties further agree to submit themselves to the jurisdiction of said court, to the exclusion of any other judicial district that may have jurisdiction over such a dispute according to any law. The undersigned does hereby consent to the subject matter and personal jurisdiction of said Court over any such dispute arising pursuant to this Contract and any and all subsequent changes, additions, appendixes, addenda or any other amendment to this Contract, without regard to conflicts of laws.

26. SUCCESSORS AND ASSIGNMENTS.

The benefits and obligations of this Contract shall transfer and be binding upon the parties and their respective successors and permitted assigns, provided that Contractor shall not assign or transfer its interest in this Contract without prior written approval of Client. Client shall have the right to assign its interests in this Contract.

27. FORCE MAJEURE.

The parties shall not be liable for delay in performance hereunder to the extent such delay results from causes beyond the party's reasonable control, or from strikes, lockouts, war, fires, unusually severe weather, delays of common carriers, acts of God, or detrimental governmental actions.

28. SEVERABILITY.

If any provision of this Contract is invalid or unenforceable under any statute or rule of law within the appropriate jurisdiction, the provision is to that extent to be deemed omitted and the remaining provisions shall not be affected in any way.

29. AUTHORITY.

Each party represents and warrants that it has the full right, power and authority to enter into this Contract and to effectuate the purpose and intent hereof. Each party further represents and warrants, respectively, that it is aware of no obligation or disability that would prevent it from entering into this Contract and fully performing all of its obligations hereunder.

30. ENTIRE AGREEMENT; AMENDMENT.

This Contract, and the provisions and clauses incorporated herein by reference, contain the entire agreement and understanding between Client and Contractor relating to the subject matter herein, and supersedes any other agreement or understanding, whether written or oral, relating to this Contract. No amendment, waiver or discharge of these terms will be valid unless in writing and signed by both parties.

31. COUNTERPARTS.

This Contract may be signed in one or more counterparts. A facsimile or electronic copy of a signature shall be binding.

IN WITNESS WHEREOF, the parties execute this Contract below.

WOOD COUNTY HIGHWAY

CONTRACTOR

Sign: _____

Sign: _____

Print: _____

Print: _____

Title: _____

Title: _____

Date: _____

Date: _____

SPECIAL PROVISIONS

1) General.

Perform the work under this construction contract for Project 2017-72-06 & 2017-72-07 COLD IN-PLACE RECYCLING (CIR) COUNTY HIGHWAY S & V, WOOD COUNTY, WISCONSIN as the plans show and execute the work as specified in the State of Wisconsin, Department of Transportation (Department), Standard Specifications for Highway and Structure Construction, 2017 Edition, as published by the department, and these special provisions.

2) Scope of Work.

The work under this contract shall consist of cold in-place recycled asphalt pavement, milling existing asphalt pavement, processing and mixing RAP with an asphalt stabilizing agent and water (if required) and placing and compacting the mixture for Wood County Highway (County), and all incidental items necessary to complete the work as shown on the plans and included in the proposal and contract.

3) Prosecution and Progress.

This project is anticipated to begin after May 15, 2017 and this contract requires the Contractor to complete the work by 5:00 PM, Friday, June 30, 2017. The contractor must submit a written notice with this contract when work will begin.

The engineer will issue a Notice to Begin work ten (10) days prior to the contractor's anticipated start date. Work must begin with enough time to complete work by 5:00 PM, Friday, June 30, 2017.

To revise the start date, submit a written request to the engineer within five (5) business days from receiving the Notice to Begin Work. The engineer will approve or deny the request based on the conditions cited in the request and its effect on the County's scheduled resources.

The County will provide traffic control for the project, will repair yielding areas within the project area to allow the contractor to place a sound CIR pavement, and will remove adjacent shoulder material from the edge of the existing asphalt to minimize contamination of the CIR pavement.

4) Certificate of Insurance

The prime Contractor and all sub-Contractors shall provide a Certificate of Insurance on forms acceptable to Wood County Highway Department. This shall be submitted to the County before a contract is signed.

Minimum Limit Requirements:

A. General Liability	\$1,000,000.00
B. Automobile Liability	\$500,000.00
C. Workman's Compensation	\$500,000.00

5) Traffic

The County will provide traffic control for the projects. The County will close the road to through traffic however; the contractor shall keep the road open to local traffic during construction.

6) Holiday Work Restrictions.

There are no Holiday Work Restrictions for CTH S and V.

7) Utilities.

There are utilities within the project limits, the Contractor is to work around the utilities, and no conflicts are anticipated.

8) Liquidated Damages

Contractor and County recognize that Wood County Highway S and V is a vital route for local traffic. It shall be open to traffic as soon as possible. Contractor shall pay the Owner \$500.00 per day for each day that expires after **5:00 PM, Friday, June 30, 2017** that County Highway S and V is not completed and open freely to all traffic.

A full day is counted if the roadway is not fully paved with CIR and compacted for traffic to use in both directions by 5:00 PM each day. Liquidated Damages will not be charged as long as all of the contracted work is complete.

9) Cold-In-Place Recycled Asphalt Pavement

A Description

Cold in-place recycling (CIR) consists of:

- Milling existing asphalt pavement
- Processing and mixing RAP with an asphalt stabilizing agent and water (if required), and
- Placing and compacting the mixture.

B Materials

B.1 Reclaimed Asphalt Pavement (RAP) Material

- (1) The RAP shall be milled from the existing roadway and processed in-place.
- (2) The RAP shall be free of contamination of base material, shoulder material, concrete, silt, clay, or other deleterious materials.
- (3) The milled and processed material shall conform to the following gradation prior to addition of the stabilizing agent:

<u>Sieve Size</u>	<u>Percent Passing</u>
1 1/2" (37.5 mm)	98 to 100
1"	90 to 100

B.2 Asphalt Stabilizing Agent

- (1) Use one of the following asphalt stabilizing agents, as specified in the contract documents:

- A. Foamed asphalt
- B. Emulsion CSS-1 or HFMS-2S

B.2.1 Foamed Asphalt

- (1) Foamed asphalt shall be produced with a performance graded asphalt binder; without polymer modification; in accordance to (WDOT) standard spec 455.
- (2) Asphalt binder performance grade for foamed asphalt shall be PG 46-34 or PG 52-34.
- (3) Asphalt binder shall be sufficiently heated to meet the expansion and half-life criteria; not to exceed 375° F.
- (4) Asphalt binder shall produce asphalt foam with a minimum expansion ratio of 8 and half-life of no less than 6 seconds.

B.2.2 Emulsion Type CSS-1 or HFMS-2S

- (1) CSS-1 or HFMS-2S type emulsion shall meet the requirements of (WDOT) standard spec 455.

B.2.3 Water

- (1) Water may be added to the RAP at the milling head and/or in a mixing chamber.
- (2) Water added to the RAP, used for foaming asphalt, or incorporated with the asphalt emulsion shall meet the requirements of standard spec 501.2.4.

B.3 Mixture Design

- (1) Unless stated otherwise stated in the contract documents, do not perform a mix design process for standard asphalt emulsion or foamed asphalt. Use the following application rates

per square yard inch (per square meter per mm) of compacted thickness when no mix design is performed.

Asphalt Stabilizing Agent	Application Rate (/yd ² /in)	Application Rate (/m ² /mm)
Standard Asphalt Emulsion	0.30 gallons (emulsion)	1.325 L
Foamed Asphalt	0.0011 tons (asphalt binder)	1.175 kg

C Construction

C.1 General

- (1) Unless the contract provides otherwise, keep the road open to traffic during construction.
- (2) Perform CIR operations; only when the air temperature approximately 3 feet above grade, in shade, and away from artificial heat sources is above 50°F and when the nighttime ambient air temperature is above 45°F the night prior and following; unless approved otherwise by the engineer.
- (3) Do not perform CIR operations during inclement weather; such as rain or fog; that will not allow proper mixing, placing, and/or compacting of the mixture.

C.2 Equipment

- (1) Equipment used for CIR shall be subject to approval by the engineer.
- (2) Tankers supplying hot stabilizing agent components shall be equipped to constantly monitor temperature within the tank.

C.2.1 Milling Machine

- (1) Milling units; not inclusive of pre-mill/wedge-cut milling units; shall be capable of milling the existing pavement full lane width to the depth shown on the plans, specified in the contract or directed by the engineer, in a single pass.
- (2) The units shall be equipped with automatic depth control, shall maintain constant cutting depth and width, uniform grade, and uniform slope.
- (3) For processes not incorporating additional screening, sizing, or crushing; the milling unit shall be capable of producing RAP sized as specified in B.1.
- (4) Use of a heating device to soften the pavement is not permitted.
- (5) Contractor shall maintain the existing centerline when milling and placing CIR pavement.

C.2.2 Screening, Crushing, and Sizing Equipment

- (1) Processes requiring additional screening, sizing, or crushing, shall include a unit with a closed circuit system capable of continuously returning oversized material to the crusher until all milled material entering the screening, crushing, or sizing equipment meets the gradation requirements of section B.1.

C.2.3 Mixing Unit

- (1) Processed RAP shall be mixed with the stabilizing agent and water in a mixing unit; defined as the milling machine cutter housing, a separate mixing chamber, or a pugmill.
- (2) The asphalt stabilizing agent shall be applied; using a computer controlled additive system; uniformly at the predetermined application rate. The metering of the stabilizing agent must be monitored through a calibrated pump providing a continuous readout of quantities.
- (3) The additive system shall contain separate pumping systems for adding stabilizing agent and water. Each system shall have an inspection or test nozzle for stabilizing agent and/or water sampling.
- (4) The system shall be capable of producing a uniformly mixed homogeneous recycled pavement mixture.

C.2.4 Paving Equipment

- (1) The placement and shaping of the recycled pavement mixture shall be completed using a self-propelled paver or screed integral to the recycling equipment meeting the requirements of standard spec 450.3.1.4; revised to exclude the requirement of an activated screed or strike-off assembly.
- (2) The screed shall not be heated.
- (3) If utilizing a self-propelled paver, the material shall be transferred directly into the paver hopper from the recycling equipment or with a pick-up device. When a pick-up device is used, the entire windrow shall be removed from the milled surface and transferred to the paver hopper.

C.2.5 Compaction Equipment

- (1) Compaction equipment shall be self-propelled and meet the requirements of standard spec 450.3.1.5
- (2) The number, weight, and types of rollers shall be as necessary to achieve the specified compaction.

C.3 Constructing CIR

C.3.1 Preparation

- (1) Prior to initiating CIR operations, remove from the roadway any vegetation, standing water, loose crack filler, and any other deleterious materials within the width of pavement to be recycled.

- (2) Inspect the pavement surface for areas of yielding subgrade. Yielding areas will be repaired by the County prior to CIR operations.
- (3) Contractor shall maintain the existing centerline when milling and placing CIR pavement.
- (4) The County will blade the existing base aggregate roadway shoulders away from the asphaltic surface edge to minimize contamination of the CIR pavement.

C.3.2 Processing and Placement of Recycled Pavement Mixture

- (1) Mill the existing pavement to the required depth and width indicated on the plans.
- (2) Further process the milled RAP material as necessary by crushing, screening, and/or sizing to the gradation requirements of B.1.
- (3) Blend the RAP material with the specified proportions of stabilizing agent and water; produce a uniform and homogeneous recycled mixture. The Engineer may vary the application rate of the asphalt stabilizing agent as required by existing pavement conditions.
- (4) Spread the recycled mixture to the grade, elevations, and slopes specified on the plans; avoiding tearing or scarring of the recycled pavement surface.
- (5) Ensure proper material transfer, handling, and spreading to prevent particle segregation.
- (6) Contractor shall maintain the existing centerline when milling and placing CIR pavement.
- (7) Longitudinal joints between successive CIR operations shall be overlapped a minimum of 3 inches. Transverse joints between successive CIR operations shall be overlapped a minimum of 2 feet.

C.4 Compaction

C.4.1 Compaction Requirements

- (1) On the first day of production, construct a control strip to identify the target wet density for the CIR layer. The control strip construction and density testing will occur under the direct observation and/or assistance of the Engineer.
- (2) Unless the Engineer approves otherwise, construct control strips to a minimum dimension of 500 feet long and one full lane width.
- (3) Completed control strips may remain in-place to be incorporated into the final roadway cross-section.
- (4) Construct additional control strips, at a minimum, when:
There is a significant change in mix proportions, weather conditions, or other controlling factors, the Engineer may require construction of test strips to check target density.

- (5) Construct control strips using equipment and methods representative of the operations to be used for constructing the CIR layer.
- (6) After compacting the control strip with a minimum of 2 passes, mark and take density measurements at 3 random locations, at least 1 ½ feet from the edge of the CIR layer. Subsequent density measurements will be taken at the same 3 locations.
- (7) After each subsequent pass of compaction equipment over the entirety of the control strip, take density measurements at the 3 marked locations. Continue compacting and testing until the increase in density measurements is less than 2.0 lb/ft³, or the density measurements begin to decrease.
- (8) Upon completion of control strip compaction, take 10 randomly located density measurements within the limits of the control strip, at least 1 ½ feet from the edge of the base. The final measurements recorded at the 3 locations under article paragraph (6) of this section may be included as 3 of the 10 measurements. Average the 10 measurements to obtain the control strip target density.

C.4.2 Compaction Requirements

- (1) Compact the CIR layer to a required density of 93% of the target density.
- (2) Perform initial rolling with a pneumatic tired roller. Perform final rolling using steel wheel rollers, either in static or vibratory mode, to eliminate pneumatic tire marks.

C.5 Surface Requirements

- (1) Test the pavement surface at regular intervals, and engineer selected locations, using a 10-foot straightedge or other engineer specified device.
- (2) The engineer may direct the repair of surface deviations greater than 1/4 inch between two surface contact points. High points shall be corrected by reworking, rerolling, trimming, milling, or grinding. Depressions may be corrected by reworking or have a tack coat applied and be filled with HMA immediately prior to placement of the surface treatment.

C.6 Maintaining the Work

- (1) After compaction is complete, the contractor will determine when the CIR is stable to open to traffic.
- (2) After opening to traffic, and prior to placing a surface treatment, the surface of the recycled pavement shall be maintained in a condition suitable for safe movement of traffic.
- (3) The recycled pavement surface shall be protected and maintained from standing water, deleterious substances, and/or other damage.

- (4) Any damage to the recycled pavement shall be repaired by the contractor prior to placement of the upper layer or acceptance of recycled pavement from the engineer at no additional cost to the department;

C.9 Curing and Surfacing

C.9.1 Curing

- (1) Application of a surface treatment will not be allowed until the moisture content of the CIR layer is not more than 0.3% above the residual moisture content or 2.5, whichever is greater.

- (2) If the moisture content of the CIR layer does not reduce to 2.5%; the surface treatment may be applied after the change in moisture content is less than 0.3% for three consecutive calendar days.

- (3) The Engineer may adjust the drying period depending on field conditions. The CIR shall be retested until the moisture content is at or below the limits stated above.

C.9.2 Tack Coat

- (1) Tack coat to be applied by Wood County.

C.9.3 Surfacing

- (1) Surfacing materials, equipment, and construction to be performed by Wood County.

D Measurement

- (1) The department will measure the Asphalt Stabilizing Agent incorporated into the work by the ton, acceptably completed; as metered through a calibrated pump, or through delivered ticket quantity.

- (2) The department will measure the Cold-In-Place Pavement Partial Depth bid item as acceptably completed by the square yard (SY).

E Payment

- (1) The department will pay for the measured quantities at the contract unit price under the following bid item:

ITEM NUMBER	DESCRIPTION	UNIT
SPV.0180.01	Cold-In-Place Recycling Pavement Partial Depth	SY
SPV.0195.01	Asphalt Stabilizing Agent	TON
SPV.0070.01	Asphalt Stabilizing Agent	GAL

- (2) Payment is full compensation for measured quantities as specified above; all material including mixing and milling water; equipment necessary for milling and sizing, mixing, paving, compacting the completed CIR; and for furnishing all labor, tools, and incidentals necessary to mill the existing pavement for recycling, size the milled RAP,

inject and mix the RAP with the stabilizing agent, place or pave, compact, and maintain the completed CIR.

(3) Payment for Asphalt Stabilizing Agent is per ton or gallon depending on the contractor's preference. See B.2 above.

(4) Repair of yielding areas will be completed by Wood County.

(5) Removing or blading away of the adjacent shoulder material will be completed by Wood County.

(6) Surfacing treatments, including tack coat, will be constructed by Wood County.

**PROPOSAL FOR COUNTY HIGHWAY S & V COLD IN-PLACE RECYCLING
(PROJ. NO. 2017-72-06 & 2017-72-07)**

April 5, 2017

TO: Wood County Highway Infrastructure and Recreation Committee
555 – 17th Avenue North
Wisconsin Rapids, WI 54495-1902

We, the undersigned, propose to furnish to the Wood County Highway Commission, 555 – 17th Avenue North, Wisconsin Rapids, WI the following as herein specified by us in accordance with the NOTICE OF BIDS, General Bidding Procedure and Specifications hereto attached:

ITEM	DESCRIPTION	APPROXIMATE QUANTITY AND UNITS	UNIT BID PRICE	BID AMOUNTY
Item SPV.0180.01	Cold-In-Place Recycling Pavement Partial Depth	46,300 SY		\$
Item SPV.0195.01	Asphalt Stabilizing Agent	153 TON		\$
Item SPV.0070.01	Asphalt Stabilizing Agent	41,700 GAL		\$
			TOTAL BID AMOUNT	\$

Reminder Bidders: Bid either Asphalt Stabilizing Agent by the TON if you plan to use foamed asphalt, or Asphalt Stabilizing Agent by the GAL if you plan to use Standard Asphalt Emulsion. DO NOT BID BOTH.

If bidder has alternatives specify below:

Increase/Deduction #1 _____ \$ _____.

Increase/Deduction #2 _____ \$ _____.

COMPANY NAME OF BIDDER _____

REPRESENTATIVE _____

TITLE _____

ADDRESS _____

PHONE NO. / CELL _____

E-MAIL _____

NOTICE OF BIDS

The Wood County Highway Infrastructure and Recreation Committee will accept sealed Bids only (no faxed Bids accepted) up until 10:00 A.M. (CST) - (WARNING- Mail delivery is after 10:00 A.M.) on Wednesday, April 5, 2017 at the Highway Commissioner's Office, 555 - 17th Avenue North, Wisconsin Rapids, WI 54495-1966 for the following:

Provide and install:

CTH Y Project ID 2017-72-08:

375 LF of Steel Plate Beam Guard (with 8 foot steel posts), Class A and four (4) Steel Plate Beam Guard Energy Absorbing Terminals

CTH C Project ID 2017-72-10:

50 LF of Steel Plate Beam Guard (with 8 foot steel posts), Class A and four (4) Steel Plate Beam Guard Energy Absorbing Terminals for structure over unnamed tributary to Rocky Run.

200 LF of Steel Plate Beam Guard (with 8 foot steel posts), Class A, 200 LF Steel Thrie Beam, and four (4) Steel Plate Beam Guard Energy Absorbing Terminals for structure over Rocky Run.

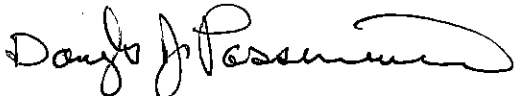
CTH N Project ID 2017-72-11:

200 LF of Steel Plate Beam Guard (with 8 foot steel posts), Class A, 326 LF Steel Thrie Beam, and four (4) Steel Plate Beam Guard Energy Absorbing Terminals for structure over Rocky Run.

Drawings, Specifications, Quoting Procedure and Forms may be had by applying at the above office.

The Committee reserves the right to reject any or all bids or to accept any bid they deem most advantageous to Wood County.

By Order of the Wood County Highway Infrastructure and Recreation Committee



Douglas J. Passineau, Highway Commissioner

GENERAL QUOTING PROCEDURE

BID OPENING: April 5, 2017

10:00 A.M. (CST)

To comply with the NOTICE OF BIDS, the following General Quoting Procedure and Specifications are to govern:

All bids must be in the Office of the County Highway Commissioner, 555- 17th Avenue North, Wisconsin Rapids, WI by 10:00 A.M. (CST), Wednesday, April 5, 2017. Bids must be sealed and properly identified giving the name and address of the bidder. Bids must be in a container or envelope and marked:

**BIDS FOR: *BEAM GUARD INSTALLATION,*
PROJECTS 2017-72-10, 11, 08
CTH C, CTH N, & CTH Y
*WOOD COUNTY, WISCONSIN***

All bids will be publicly opened at 10:00 A.M. (CST), Wednesday, April 5, 2017. The County Highway Infrastructure and Recreation Committee or its authorized representatives will review and approve the bids on Thursday, April 6, 2017.

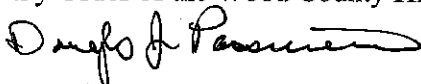
All bids must be entered and submitted on the specified form of Proposal prepared by the Highway Commission and only bids submitted on these forms will be considered for award purposes by the Commissioner. The General Quoting Procedure, Specifications and Proposal shall constitute the bid of each party submitting a bid and must be attached in the above order. Each party submitting a bid shall attach such additional information to their proposal as they deem advisable and necessary for the benefit of the Committee in assembling comparative specifications.

A Bid Bond, Business Check, or Cashier's Check in the amount of 5% of the contract is required for this project and shall be submitted with the Contract Proposal. Each party submitting a bid must submit satisfactory evidence of ability to make delivery of the material as specified and as agreed to by both parties.

The Committee reserves the right to consider all proposals for a period not to exceed thirty (30) days from the date of opening. The Department will either award the contract or reject all bids within that time. Each party will be allowed to have a representative appear before the Department Representatives to explain his bid and specifications of the product as bid.

The Wood County Highway Infrastructure and Recreation Committee reserves the right to reject any or all bids or parts, thereof and to WAIVE any technicality in any bid submitted and to make such award as they deem most advantageous to Wood County.

By Order of the Wood County Highway Infrastructure and Recreation Committee:



Douglas J. Passineau, Highway Commissioner

WOOD COUNTY
CONTRACT
&
GENERAL SPECIFICATIONS
FOR
Steel Plate Beam Guard
and
Steel Plate Beam Guard Energy Absorbing Terminals

Project ID 2017-72-10 CTH C,
Project ID 2017-72-11 CTH N,
Project ID 2017-72-08 CTH Y,
WOOD COUNTY, WISCONSIN

PREPARED BY THE WOOD COUNTY ENGINEER

March 7, 2017

CONTRACT FOR ROAD CONSTRUCTION

PROJECTS 2017-72-10, 11, 08 **BEAM GUARDINSTALLATION** **CTH C, CTH N, & CTH Y** **WOOD COUNTY, WISCONSIN**

THIS AGREEMENT (the "Contract") is made effective as of this ___ day of ___, 2017, by and between the Wood County Highway Department ("Client") and _____ ("Contractor") for the construction of road and bridge project activities on Wood County Highways C, N, & Y (Project ID Nos. 2017-72-10, 11, & 08).

NOW, THEREFORE, the parties agree as follows:

1. GENERAL

- a) DESCRIPTION: This section describes providing steel guardrail systems including rail, terminal and transition treatments.
- b) STANDARD SPECIFICATIONS & GUIDES: State of Wisconsin Standard Specifications for Highway and Structure Construction 2017 Edition.

2) DEFINITIONS

- a) Department – Wisconsin Department of Transportation
- b) Manufacturer – Company or organization that produces the steel guardrail systems from raw materials to the designed finish product.
- c) Supplier – Manufacturer or Company/Organization directly selling the finished product to the project purchasing company/organization.

3) SUBMITTALS FOR PRODUCT ACCEPTANCE (by Supplier)

- a) Product Data: Submit a product data sheet (PDS) for the product meeting this specification.
 - i) All guardrail materials and associated guardrail components are to meet the material requirements of standard spec 614 and AASHTO Specification M180. Any guardrail material not in conformance with specifications will be removed and replaced at no cost to the Wood County Highway Department.
 - ii) The engineer will verify that the Certification of Compliance Product Identification number is on the shipment of beam guard delivered to the project site.

- iii) Only materials from the manufacturers listed on the department Pre-Qualified Steel Plate Beam Guard Manufacturers List will be accepted for use on this project.

4) MATERIALS

- a) Furnish materials conforming to Standard Spec 614.
 - i) Furnish 8 foot steel posts conforming to AASHTO M270 Grade 36 and galvanized according to AASHTO M111. Post will be installed at the standard 6'-3" spacing.

5) CERTIFICATION

- a) A Certification of Compliance shall be furnished by the guardrail installer for each manufacturer of beam guard and energy absorbing terminal for the project. The certification needs to have the date, signature and title of the person certifying the product. Information on the certificate shall include the following:
 - i) Project ID –
 - ii) Highway Number –
 - iii) Project Description –
 - iv) County –
 - v) Name or Brand of Manufacturer –
 - vi) Product Identification Number (i.e.: AASHTO M180 Class A Type II) –
 - vii) Signed Buy America Certification Statement*

*Certification statement needs to state where the steel/iron has been melted, molded, galvanized, epoxy coated etc. A signature is required on the Buy America certification. Also, mill and manufacturer certification is expected to be on file and provided upon request. Wood County is requesting Buy America for this project.

6) CONSTRUCTION

- a) Install posts according to standard spec 614.3.2.1
- b) Install rail according to standard spec 614.3.2.2, except as modified here, attach Steel Thrie Beam to existing bridge railing according to the SDD 14B 15-9b, for CTH C & N structures.
- c) Install guardrail terminals and transitions according to standard spec 614.3.2.3
- d) Removal of existing beam guard will be done by County Forces.
- e) Grading, shaping, and finishing for Barrier System will be done by County Forces.
- f) Materials shall be installed by the following dates:

Project ID 2017-72-10, CTH C	June 9, 2017
Project ID 2017-72-11, CTH N	June 9, 2017
Project ID 2017-72-08, CTH Y	June 9, 2017,

unless written notice from Wood County to extend the completion date.

7) TRAFFIC

The County will provide traffic control for each project. The Contractor is NOT guaranteed to be able to store equipment and materials within the work zone over night.

Temporary traffic signals MAY BE used to control traffic through the work zone and limit the work zone to one lane. The County will supply and erect all advance traffic control signs, barricades and drums.

Each Road shall remain open to traffic; therefore contractors may need to supply temporary flag men while maneuvering through and around work zones,

8) MEASUREMENT

- a) The department will measure bid items under this section with EACH as the unit of measure as each individual unit acceptably completed.
- b) The department will measure bid items under this section with LF as the unit of measure by the linear foot acceptably completed, measured along the face of the rail element.

9) PAYMENT

- a) The department will pay for measured quantities at the contract unit price under the following bid items.

614.0230	Steel Thrie Beam	LF
614.0300	Steel Plate Beam Guard (class A)	LF
614.0370	Steel Plate Beam Guard Energy Absorbing Terminal	EACH

In exchange for the Contractor's performance of the Work, Client will pay Contractor the total firm-fixed price amount of \$_____.

All funds are subject to availability from the Client. Final payment will be issued only upon satisfactory completion of the Work and all other obligations due under this Contract. Client will have no liability for payment for any work performed by Contractor that is not covered in this Contract or that is not approved in writing by Client. Notwithstanding any other provisions of this Contract, failure of Contractor to submit required or necessary reports when due, failure to perform the Work as and when required, will result in withholding of payments under this Contract.

10) INSURANCE

All prime contractors shall provide a Certificate of Insurance on forms acceptable to the Client. All Subcontractors shall provide and carry at a minimum, the insurance coverage and limits as indicated in the General Conditions or as required by the Contractor, whichever is higher. This shall be submitted to the Client before a Contract is signed.

The Client (Wood County) shall be named as additional insured on the Certificates of Insurance. General liability insurance shall cover property damage to existing buried utilities. Contractor shall secure, pay premiums for, and keep in force until the expiration of the Contract, or any renewal thereof, the following insurance: (1) Worker's Compensation Insurance, as required by the laws of the State of Wisconsin; (2) Owner's landlord's and tenant's bodily injury liability insurance with limits of not less than \$1,000,000 for each person, and \$5,000,000 for each accident; (3) Property Damage Liability Insurance with limits of not less than \$500,000 for each accident and a total limit of \$1,000,000 for damages arising out of bodily injuries to or death of two persons in any one accident. Other insurance not specifically mentioned herein when

required by law or other regulations. Each insurance company of Contractor must hold a current Certificate of Authority issued by the Director of the State Department of Insurance authorizing it to transact the appropriate kind of insurance business in State. To be acceptable, the policy of insurance must contain a provision committing the insurer to pay for covered acts and omissions regardless of the fact that the same acts or omissions by Contractor, its agents and employees may be covered under the Federal Tort Claims Act. Each policy of insurance shall contain an endorsement providing that cancellation by the insurance company shall not be effective unless a copy of the cancellation is mailed (registered) to the appropriate official of Contractor at least 30 days before the effective date of the cancellation notice received, immediately upon receipt. A certificate of each policy of insurance and any changes therein, shall be furnished to Client immediately upon receipt from the insurance company. Insurance companies of Contractor must be satisfactory to the Client. When in Client's opinion an insurance company is not satisfactory for reasons stated in writing, Client may recommend Contractor obtain insurance through companies, which Client deems satisfactory.

11) WARRANTY

Contractor warrants the Work is free of deficiencies and defects in materials and/or workmanship and that the Work conforms in all respects to the requirements of this Contract, and any other applicable contract documents. Contractor agrees to satisfy such warranty obligations without cost to Client.

12) COMPLIANCE WITH LOCAL, STATE AND FEDERAL LAW

In the performance of the Work, Contractor shall give all notices and comply with all applicable local, state and federal laws, executive orders and regulations. Unless otherwise exempt, the following clauses are incorporated by reference: Equal Opportunity Clause, 41 CFR § 60 1.4; Disabled Veterans and Veterans of the Vietnam Era, 41 CFR § 60 250.5; Individuals with Disabilities, 41 CFR § 60 741.5. In addition, unless exempt, Contractor shall comply with all affirmative action requirements and any other requirements set forth in 41 CFR Chapter 60 and all applicable Executive Orders pertaining to equal opportunity. Contractor also agrees to comply with Executive Order 13201 and its implementing regulation at 29 CFR Part 470.

13) DISPUTES

With respect to any dispute or claim hereunder, Contractor agrees to be bound to Client by a final decision of a Contracting Officer, board of contract appeals or other court whether or not Contractor is a party to such proceedings. Contractor agrees to assert any claim it may have relating to the Contract through Client and to allow adequate time for the exhaustion of all remedies under the Contract. Provided Contractor's claim is not barred by the foregoing provisions, such claim shall be resolved pursuant to the Choice of Law provision below.

14) INDEMNIFICATION

Contractor shall indemnify and hold Client harmless from any claims, actions, and liabilities, including but not limited to attorneys' fees and costs, arising from any breach of this Contract by Contractor, or otherwise arising out of or relating to Contractor's performance of the Work, except to the extent caused by the wrongful act or gross negligence of an employee or other agent of Client.

14) SEVERABILITY.

If any provision of this Contract is invalid or unenforceable under any statute or rule of law within the appropriate jurisdiction, the provision is to that extent to be deemed omitted and the remaining provisions shall not be affected in any way.

15) AUTHORITY.

Each party represents and warrants that it has the full right, power and authority to enter into this Contract and to effectuate the purpose and intent hereof. Each party further represents and warrants, respectively, that it is aware of no obligation or disability that would prevent it from entering into this Contract and fully performing all of its obligations hereunder.

16) ENTIRE AGREEMENT; AMENDMENT.

This Contract, and the provisions and clauses incorporated herein by reference, contain the entire agreement and understanding between Client and Contractor relating to the subject matter herein, and supersedes any other agreement or understanding, whether written or oral, relating to this Contract. No amendment, waiver or discharge of these terms will be valid unless in writing and signed by both parties.

17) COUNTERPARTS.

This Contract may be signed in one or more counterparts. A facsimile or electronic copy of a signature shall be binding.

IN WITNESS WHEREOF, the parties execute this Contract below.

WOOD COUNTY HIGHWAY

CONTRACTOR

Sign: _____

Sign: _____

Print: _____

Print: _____

Title: _____

Title: _____

Date: _____

Date: _____

April 5, 2017

TO: Wood County Highway Infrastructure and Recreation Committee
555 – 17th Avenue North
Wisconsin Rapids, WI 54495-1966

Gentlemen:

We, the undersigned, propose to furnish to the Wood County Highway Commission, 555 – 17th Avenue North, Wisconsin Rapids, WI the following as herein specified by us in accordance with the NOTICE OF BIDS, General Quoting Procedure and Specifications hereto attached:

614.0230	Steel Thrie Beam	LF	_____.
614.0300	Steel Plate Beam Guard (class A)* *with 8 foot steel posts – see spacing on plan	LF	_____.
614.0370	Steel Plate Beam Guard Energy Absorbing Terminal	EACH	_____.

Total Lump Sum Cost \$ _____

Alternatives: Describe increase or decrease from bid price if material or conditions differ from Specifications.

COMPANY NAME OF BIDDER _____

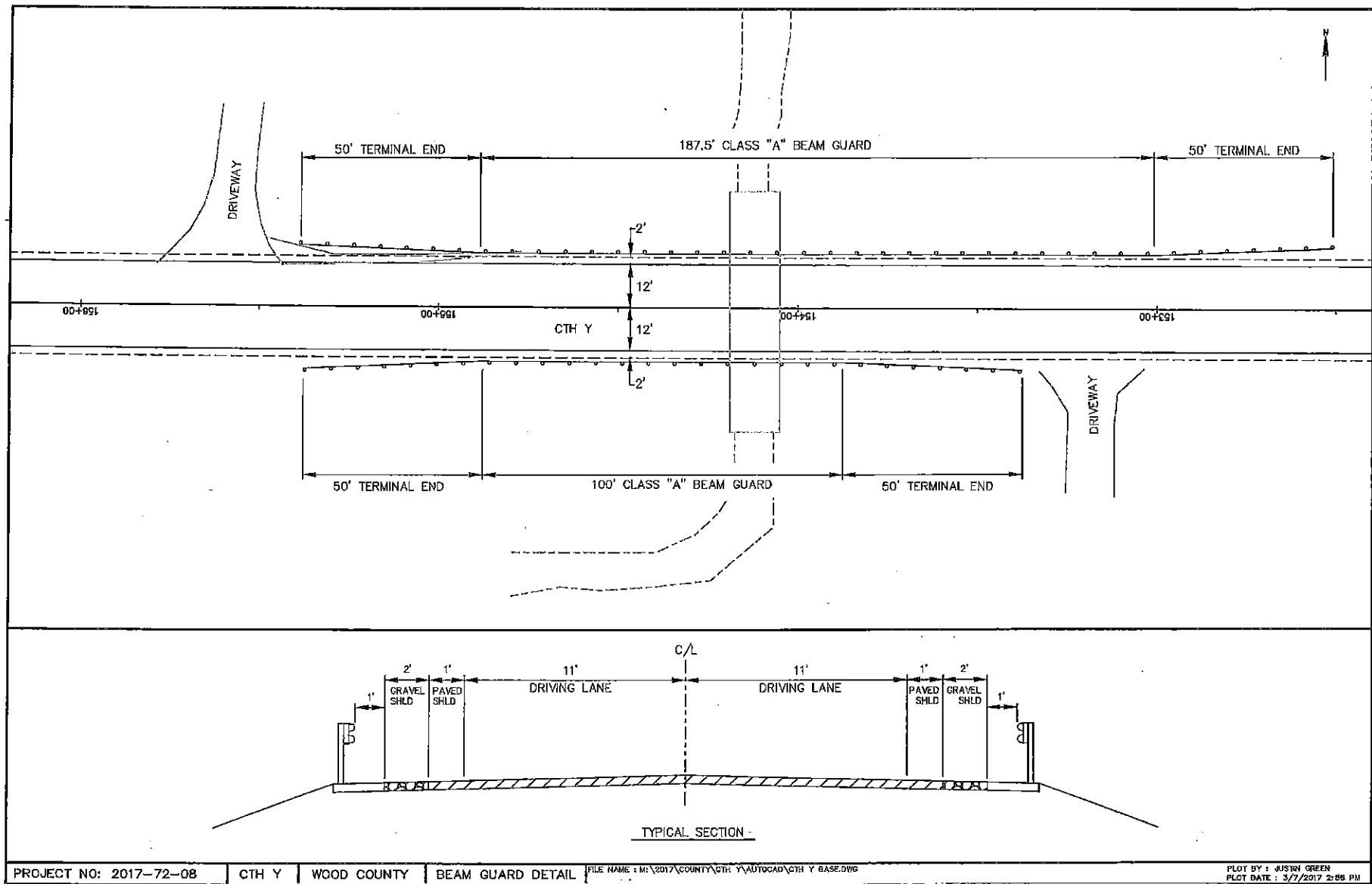
REPRESENTATIVE _____

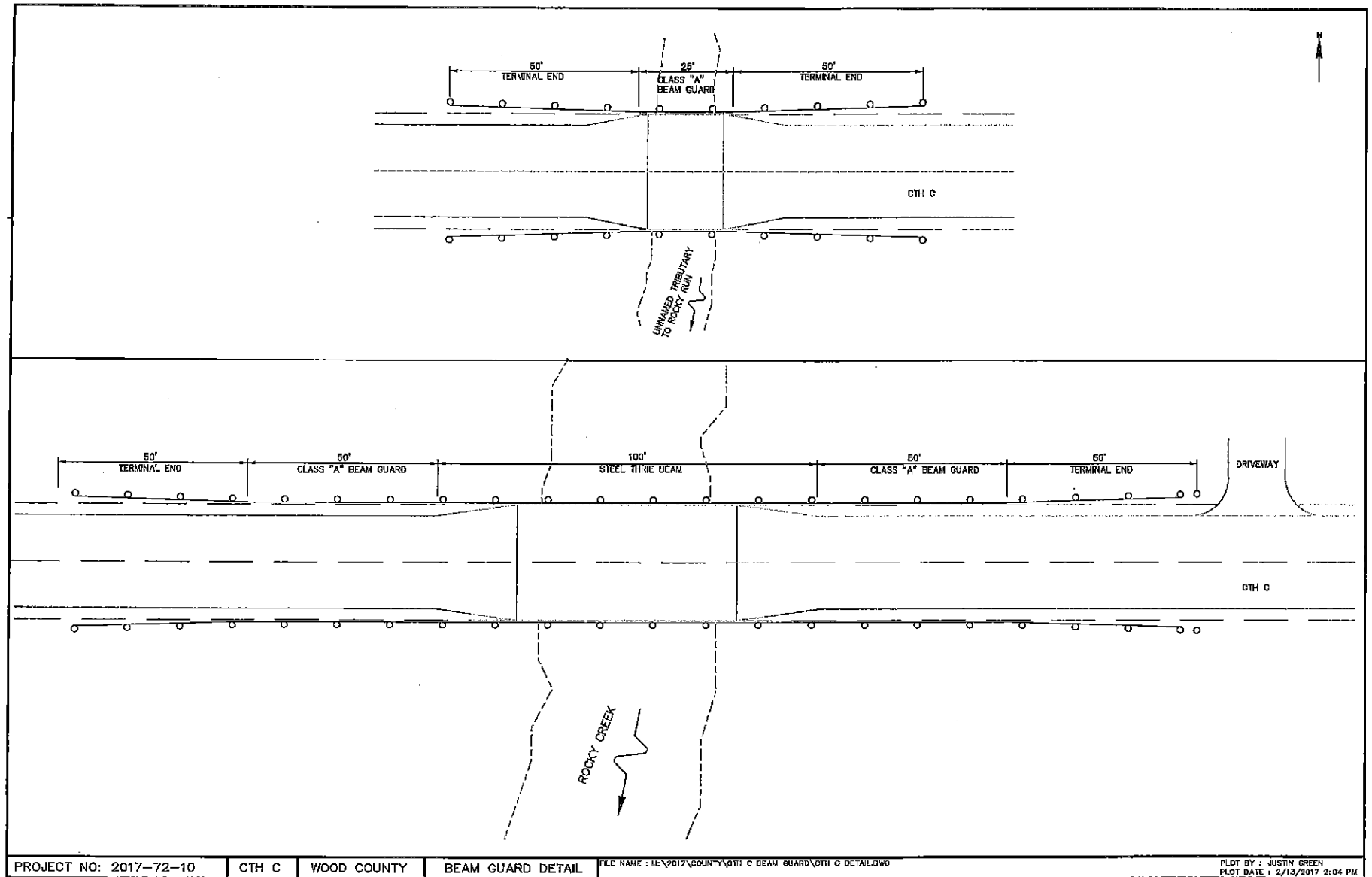
TITLE _____

ADDRESS _____

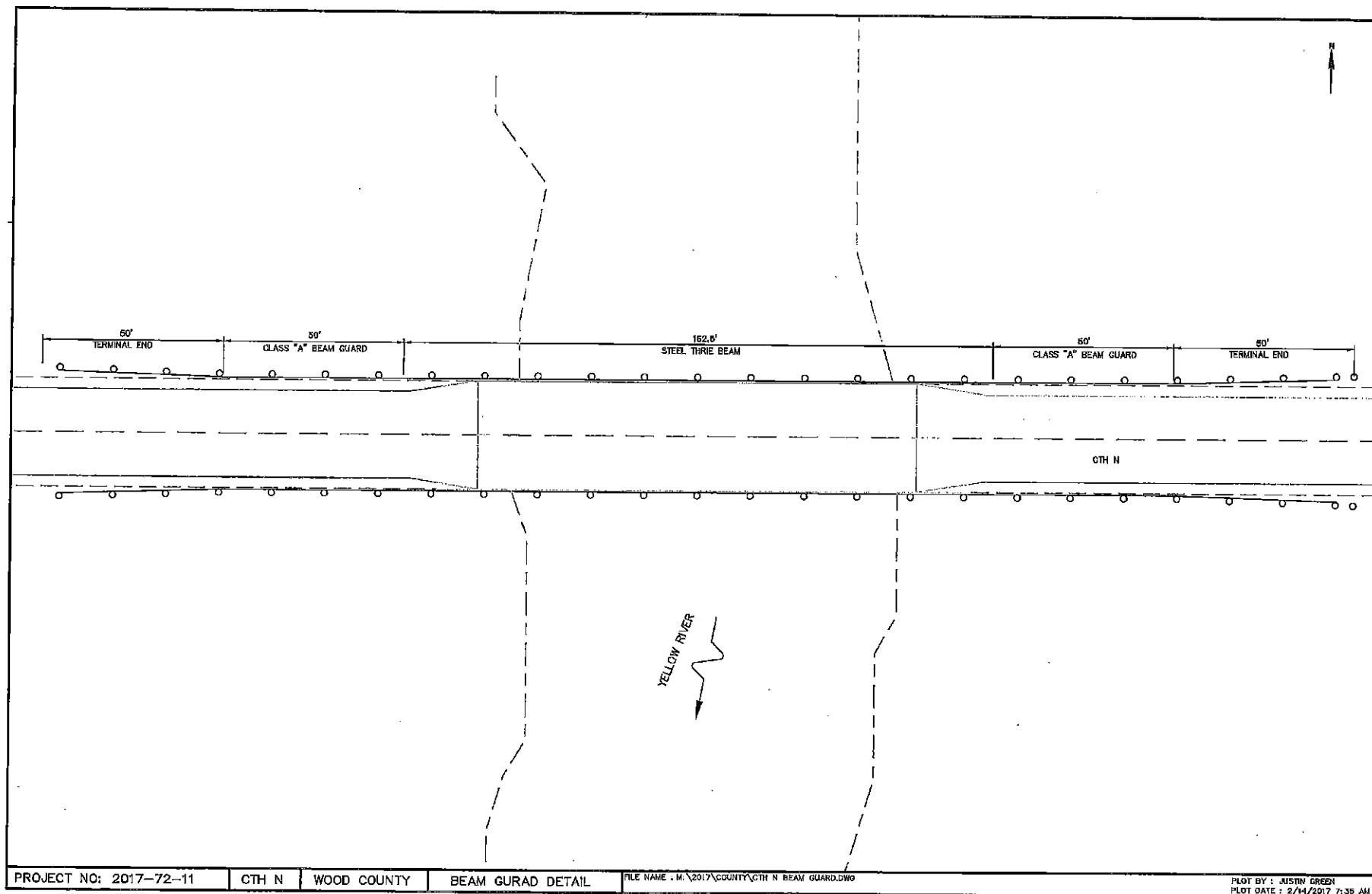
PHONE NO. / CELL _____

E-MAIL _____





PROJECT NO: 2017-72-10	CTH C	WOOD COUNTY	BEAM GUARD DETAIL	FILE NAME : M:\2017\COUNTY\CTH C BEAM GUARD\CTH C DETAIL.DWG	PLOT BY : JUSTIN GREEN PLOT DATE : 2/13/2017 2:04 PM
------------------------	-------	-------------	-------------------	--	---



BILL OF MATERIALS

NOTE NO.	QTY.	DESCRIPTION
①	4	WOOD BREAKAWAY TERMINAL POSTS: 5/2" H 1 1/2" X 3" 9"
②	**	STEEL TUBE OPTION 1 - QUANTITY OF 4 TS 8" X 6" X 0.180", 4'-5" LONG OR OPTION 2 - QUANTITY OF 2 TS 8" X 6" X 0.180", 6'-0" AND 2 TS 5" X 5" X 0.185", 4'-5" LONG
③	2	SOL PLATE: 2'-0" X 1'-6" X 1/4" **
④	4	WOOD BREAKAWAY CRT POST: 6" X 8" X 6'-0"
⑤	5	WOOD OFFSET BLOCKS: 6" X 8" X 1'-2"
⑥	1	PIPE SLEEVE: 2" X 5 1/2" STANDARD PIPE
⑦	1	BEARING PLATE
⑧	1	DCT CABLE ASSEMBLY
⑨	1	CABLE ANCHOR BOX
⑩	1	STRUT & YOKE
⑪	1	STEEL PLATE BEAM END PANEL
⑫	1	12 GA. 15'-35 1/2" LONG FOR SRT-350, ET-2000 AND ET-2000 PLUS
⑬	3	STEEL PLATE BEAM: 12 GA. 13'-5 1/2"
⑭	1	ET-2000/ET-2000 PLUS GUARDRAIL EXTENDER OR SRT-350 IMPACT HEAD AS FURNISHED BY MANUFACTURER
⑮	1	6.0x6" ALUMINUM SHEET WITH REFLECTIVE SHEETING TYPE F PER SECTION 637 OF THE STANDARD SPECIFICATIONS
⑯	1	E.A.T. MARKER POST

GENERAL NOTES

FOLLOW MANUFACTURER'S INSTALLATION RECOMMENDATIONS, IF NONE ARE AVAILABLE, INSTALL 3/8" X 2'-6" BUTTON HEAD BOLTS AT ALL POSTS EXCEPT FOR POST 1.

① THE SLOPE IN THE AREA BOUNDED BY THE GRADELINE, THE HEDGE POINT LINE AND THE CLEAR ZONE LIMITS (CZL) SHALL BE 4:1 OR FLATTER.

② AFTER FINAL ASSEMBLY, CHECK CABLE TO BE SURE IT IS TIGHT AND HAS NOT RELAXED.

③ THE 12 SLOT FIRST RAIL PANEL MAY BE USED IN LIEU OF THE 3 SLOT RAIL PANEL ON SRT-350 ONLY.

④ THE TOP OF THE STEEL TUBE ON POSTS 1 THROUGH 4 SHALL NOT BE MORE THAN 3" ABOVE THE FINISH GROUND ELEVATION.

⑤ THE CENTER OF THE UPPER 3/4" DIAMETER HOLE ON POST 3 THROUGH 8 SHALL BE 7/4" ABOVE THE FINISHED GROUND LINE.

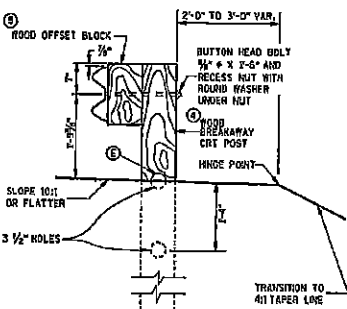
⑥ ATTACH ALUMINUM SHEET TO E.A.T. HEAD USING 4 STAINLESS STEEL SELF-TAPPING SCREWS, ONE SCREW PER CORNER.

STEEL POSTS SHALL NOT BE ALLOWED FOR USE WITH ENERGY ABSORBING TERMINALS.

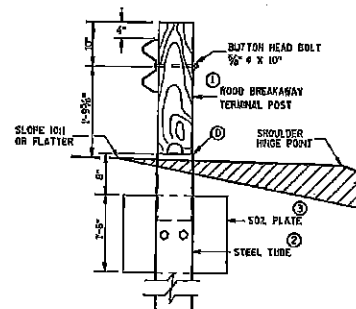
DO NOT INSTALL REFLECTORS ON THE FIRST 10 FEET OF THE APPROACH END OF THE ENERGY ABSORBING TERMINAL.

* DO NOT ATTACH BLOCKOUTS TO POSTS 1 AND 2.

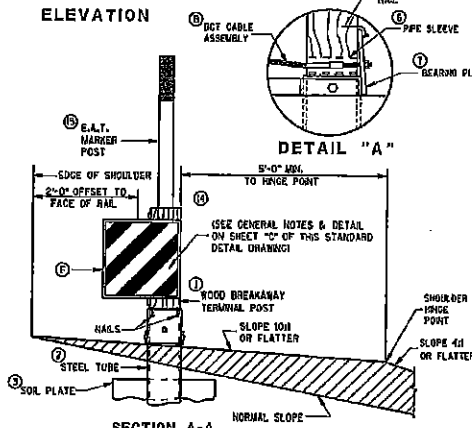
** SDD SHOWS 4 - 54 INCH STEEL TUBES WITH SOL PLATES INSTALLED ON POST 1 AND POST 2. POST 3 AND 4 DO NOT NEED SOL PLATES. AN ALTERNATIVE INSTALLATION WOULD CONSIST OF 2 - 12 INCH STEEL TUBES ON POST 1 AND POST 2 AND 54 INCH SOL TUBES ON POSTS 3 AND 4. THE ALTERNATIVE INSTALLATION DOES NOT REQUIRE SOL PLATES.



SECTION C-C
TYPICAL AT POST NOS. 6, 8

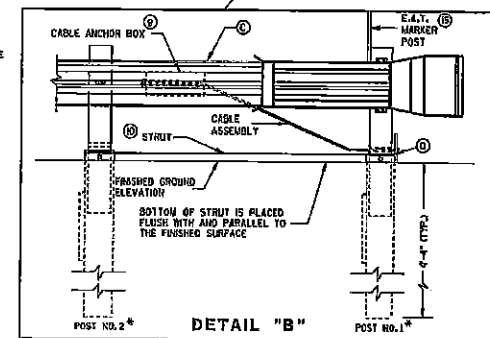


SECTION B-B
TYPICAL AT POST NO. 2



SECTION A-A
TYPICAL AT POST NO. 1

DETAIL "A"



DETAIL "B"

**STEEL PLATE BEAM GUARD
ENERGY ABSORBING TERMINAL**

STATE OF WISCONSIN
DEPARTMENT OF TRANSPORTATION

PROJECT NO: 2017-72-11

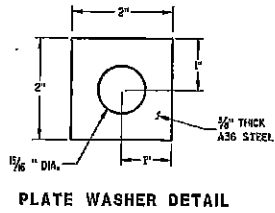
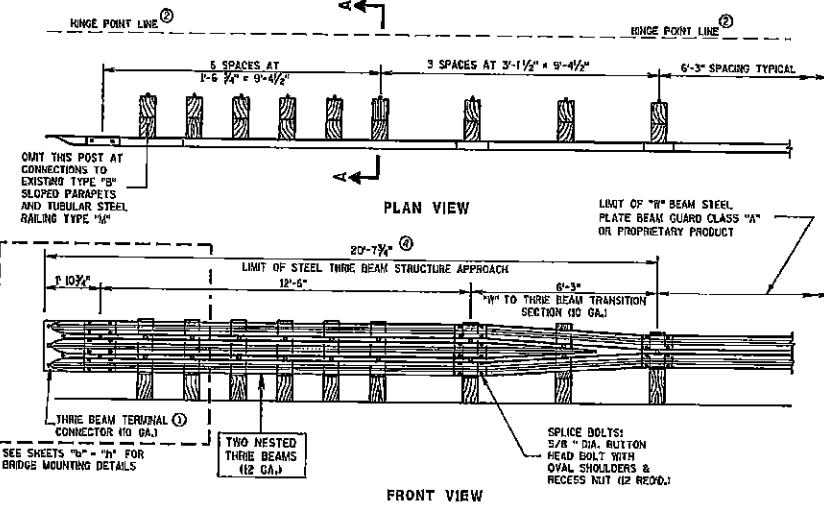
CTH N

WOOD COUNTY

BEAM GUARD DETAIL

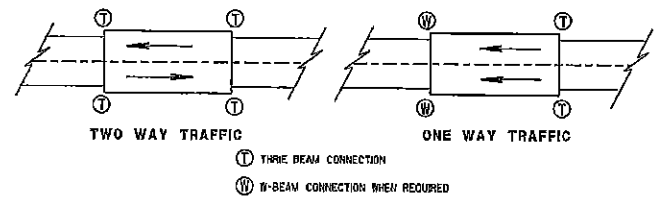
FILE NAME: M:\2017\COUNTY\CTH N BEAM GUARD.DWG

PLOT BY: JUSTIN GREEN
PLOT DATE: 2/14/2017 10:03 AM

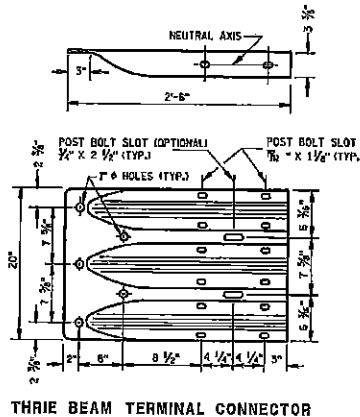


GENERAL NOTES

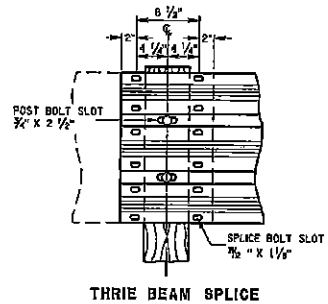
- BOLT THE THRIE BEAM TO ALL POSTS AND BLOCKOUTS. DRILL OR PUNCH BOLT HOLES IN THE BEAM IF THE POST SPACING IS LESS THAN 6'-3".
- DO NOT USE STEEL POSTS AND NOTCHED PLASTIC BLOCKOUTS IN THE STEEL THRIE BEAM STRUCTURAL APPROACH AND THE TRANSITION SECTION OF STEEL PLATE BEAM GUARD, CLASS "A" INSTALLATIONS.
- IF ROCK IS ENCOUNTERED, REMOVE ROCK TO FULL DEPTH OF POST PLUS 2 1/4". AND 12" DIAMETER AROUND POST. SEE MBS FOR MORE DETAILS.
- BRIDGE RAILING TYPE "B" DOES NOT REQUIRE A TERMINAL CONNECTOR.
- MINIMUM EMBEDMENT SHALL BE 4'-0". WHERE EXISTING CONDITIONS DO NOT PERMIT THE APPROPRIATE EARTHWORK SHOWN ON THE PLAN TYPICAL SECTIONS OR DETAILS, THE ENGINEER MAY ALLOW THE REDUCTION OR ELIMINATION OF THE 2 FOOT DISTANCE TO THE HINGE POINT. OTHERWISE BUILD AS THE PLAN SHOWS OR AS THE ENGINEER DIRECTS. IF THE 2 FOOT DISTANCE TO THE HINGE POINT IS REDUCED OR ELIMINATED, INCREASE THE POST EMBEDMENT DEPTH TO 4'-6" OR MORE.
- POST BOLTS ARE 3/4" DIAMETER ASTM A307 BUTTON HEAD BOLT. A POST BOLT REQUIRES A 3/4" DIAMETER A563A DOUBLE RECESSED 100 HEAVY HEX AND A 3/4" DIAMETER F844 FLAT WASHER. LENGTH OF POST BOLT MAY VARY.
- ALL WOOD POSTS MUST BE 6" X 8" AND AT LEAST 7'-0" LONG.



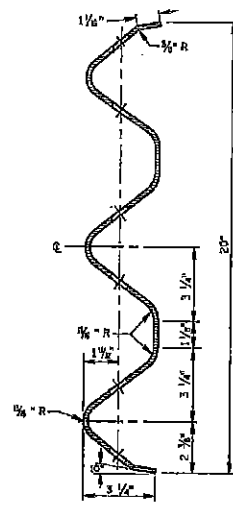
TYPICAL LOCATIONS OF THRIE BEAM AND W-BEAM CONNECTIONS TO BRIDGE



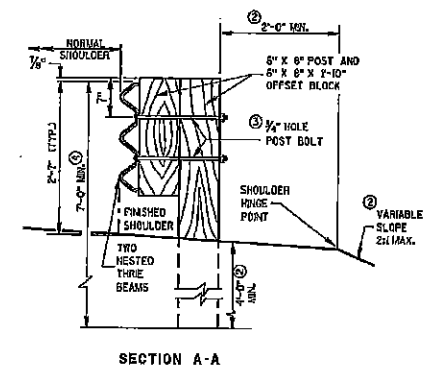
THRIE BEAM TERMINAL CONNECTOR



THRIE BEAM SPLICE



SECTION THRU THRIE BEAM RAIL ELEMENT

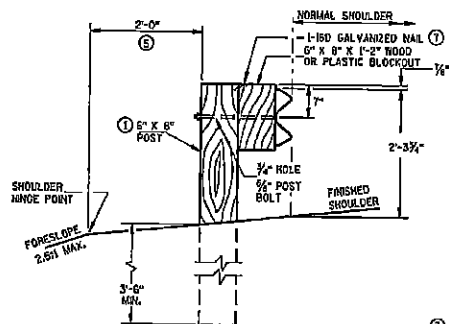


SECTION A-A

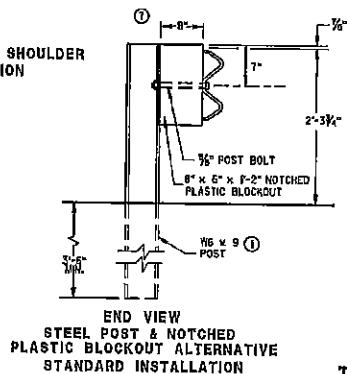
STEEL THRIE BEAM STRUCTURE APPROACH	
STATE OF WISCONSIN DEPARTMENT OF TRANSPORTATION	
APPROVED 8/31/2012 DATE	/s/ Jerry H. Zogg ROADWAY STANDARDS DEVELOPMENT ENGINEER
PWA	

GENERAL NOTES

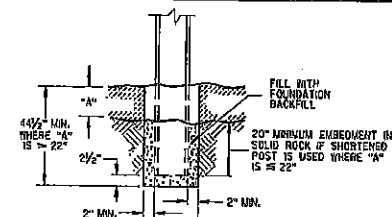
1. W6 X 9 OR W6 X 0.5 STEEL POSTS AND NOTCHED PLASTIC BLOCKOUTS ARE ACCEPTABLE ALTERNATIVES FOR 6" X 8" WOOD POSTS WITH WOOD OR PLASTIC BLOCKOUTS. USE APPROVED NOTCHED PLASTIC BLOCKOUTS WITH STEEL POSTS. APPROVED PLASTIC BLOCKOUT DESIGNS MAY VARY FROM THIS TYPICAL DETAIL WHEN USED IN CONJUNCTION WITH STEEL POSTS. DO NOT MIX STEEL POSTS AND WOOD POSTS IN A SINGLE INSTALLATION.
 2. USE STRUCTURAL STEEL POSTS CONFORMING TO ASTM A 36. GALVANIZED POSTS ACCORDING TO AASHTO M 10. EITHER SET THE POSTS IN DRILLED HOLES OR DRIVE TO GRADE. REMOVE LUSHRING CAUSED BY DRIVING AND REPAIR DAMAGED SPECTER COATING ON GALVANIZED POSTS.
 3. INSTALL STEEL POSTS WITH HOLES ON APPROACHING TRAFFIC SIDE.
 4. USE EITHER WOOD OR APPROVED PLASTIC BLOCKOUTS ON WOOD POSTS.
 5. IF THE DISTANCE FROM BACK OF POST TO SHOULDER RIMLINE IS LESS THAN 2 FEET INSTALL LONGER POST AT HALF POST SPACING, W BEAM (LHW).
 6. IF ROCK IS ENCOUNTERED DURING EXCAVATION, THE ENGINEER MAY APPROVE USING A 12 INCH DIAMETER POST HOLE EXTENDING 20 INCHES DEEP INTO THE ROCK. PLACE GRANULAR MATERIAL IN THE BOTTOM OF THE HOLE APPROXIMATELY 2 1/2 INCHES DEEP, CUT THE POSTS TO LENGTH AND PLACE IN THE HOLE. BACKFILL WITH MATERIAL EXCAVATED FROM THE HOLE AND COMPACT ADEQUATELY.
 7. WHEN USING STEEL POSTS AND WOOD BLOCKOUTS INSTALL FOUR 16D GALVANIZED NAILS. INSTALL NAILS AT THE BACK CORNERS OF THE BLOCK AND BEND THE NAILS OVER THE FLANGE OF THE STEEL POST.
- INSTALL BEAM GUARD SECTIONS AND ALL NECESSARY HARDWARE ACCORDING TO THE APPLICABLE PLAN AND CURRENT STANDARD AND SUPPLEMENTAL SPECIFICATIONS. ALL DIMENSIONS ARE SUBJECT TO MANUFACTURER'S TOLERANCES EXCEPT WHERE ALLOWABLE TOLERANCES ARE SHOWN.



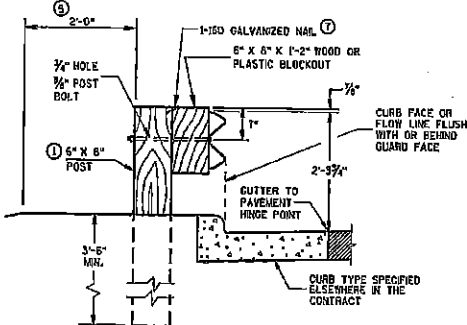
END VIEW
LOCATED ALONG A ROADWAY SHOULDER
STANDARD INSTALLATION



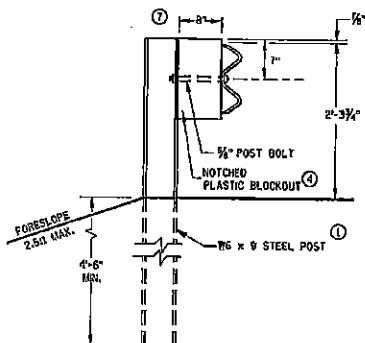
END VIEW
STEEL POST & NOTCHED
PLASTIC BLOCKOUT ALTERNATIVE
STANDARD INSTALLATION



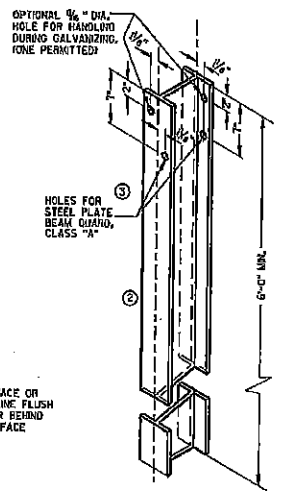
END VIEW
SETTING STEEL OR WOOD POST IN ROCK ⑥



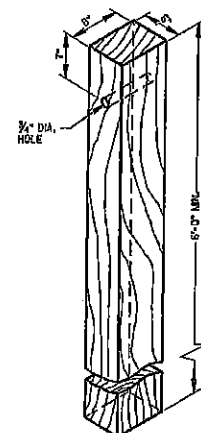
END VIEW
LOCATED ALONG A CURBED ROADWAY



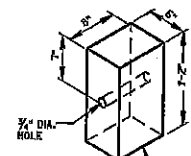
END VIEW
LONGER POST AT HALF
POST SPACING W BEAM
(LHW)



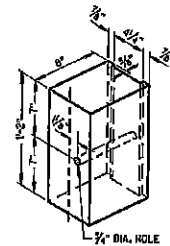
STEEL POST &
HOLE PUNCHING DETAIL
(W6 X 9) ①
ALL HOLES 3/4" DIAMETER EXCEPT AS NOTED



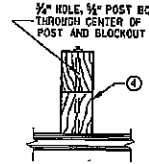
WOOD POST
(6"X8") NOMINAL



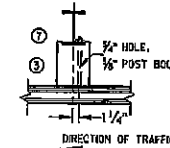
WOOD OR PLASTIC
BLOCKOUT FOR
WOOD POSTS



TYPICAL NOTCHED ①
PLASTIC BLOCKOUT
FOR STEEL POSTS



PLAN VIEW
WOOD POST, BLOCKOUT & BEAM



PLAN VIEW
STEEL POST, NOTCHED
PLASTIC BLOCKOUT & BEAM

STEEL PLATE BEAM GUARD,
CLASS "A"
INSTALLATION & ELEMENTS

STATE OF WISCONSIN
DEPARTMENT OF TRANSPORTATION

WOOD COUNTY

BEAM GUARD DETAIL

FILE NAME : M:\2017\COUNTY\OTR IN BEAM GUARD.DWG

PLOT BY : JUSTIN GREEN
PLOT DATE : 2/15/2017 9:24 AM

NORTH CENTRAL REGION SPRING MEETING

Country Aire

F1312 County Road P

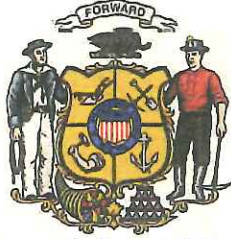
Stratford, WI 54484

Friday, April 28th, 2017

AGENDA

8:30 – 9:00	Registration / Coffee
9:00 – 9:15	Welcome / Opening Remarks
9:15 – 9:30	Utility Poles and Local Right-of-Ways
9:30 – 10:00	Dave Ross, Secretary of Transportation
10:00 – 10:15	Rose Phetteplace, Wisconsin DOT
10:15 – 10:30	Break
10:30 – 10:45	Dan Fedderly, WCHA Executive Director
10:45 – 11:15	Chip Sealing (Ken Shackleman, Meigs)
11:15 – 11:45	Soil Stabilization (Marc Hartman, Team Lab)
11:45 – 12:15	Social Time
12:15 - ?	Lunch

STATE of WISCONSIN



OFFICE of the GOVERNOR

Proclamation

WHEREAS; construction and maintenance of our streets, highways, and utility infrastructure are critical to maintaining the state's economic vitality; and

WHEREAS; this year, more than 350 state highway and bridge improvement projects are scheduled across Wisconsin along with other municipality-sponsored construction projects that will require establishment of work zones; and

WHEREAS; work zones often feature narrowed lanes, reduced speeds, temporary pavement, and night work that require drivers to slow down and eliminate distractions to protect themselves and workers; and

WHEREAS; state law prohibits drivers from using hand-held cell phones in construction zones, and also requires motorists to move over or slow down anytime they come upon highway maintenance, law enforcement, utility or other emergency vehicles, and tow trucks stopped along a road with their warning lights flashing; and

WHEREAS; last year, Wisconsin recorded more than 2,800 work zone crashes that resulted in 1,110 injuries and nine fatalities;

NOW, THEREFORE, I, Scott Walker, Governor of the State of Wisconsin,
do hereby proclaim April 3 – 7, 2017 as

WORK ZONE AWARENESS WEEK

throughout the State of Wisconsin and I commend this observance to all of our citizens.

IN TESTIMONY WHEREOF, I have
hereunto set my hand and caused the Great
Seal of the State of Wisconsin to be affixed.
Done at the Capitol in the City of Madison
this 20th day of March 2017.

A handwritten signature of Scott Walker in black ink.

SCOTT WALKER
GOVERNOR



By the Governor:

A handwritten signature of Douglas La Follette in blue ink.

DOUGLAS LA FOLLETTE
Secretary of State

Current Projects Update

By Douglas Passineau, Highway Commissioner

April 6, 2017

April HIRC meeting

Projects and Maintenance

1. Winter snow and ice control – State/County/Town/City Roads
2. Anti-icing – State/County Roads
3. Fill Salt Sheds – State/County
4. Sign Repairs – State/County
5. Rubber Crack Sealing – County
6. Cut Trees and Brushing around Bridges – State/County
7. Brushing – County/Town
8. Pothole repairs – State/County
9. State Bridge Repairs
10. Cleanup of Smith Pit
11. Removal of Snow Fence – State/County

County of Wood

Report of claims for: Highway Department

For the period of: February 2017

For the range of vouchers: 16170092 - 16170189

Voucher	Vendor Name	Nature of Claim	Doc Date	Amount	Paid
16170092	AIR COMMUNICATIONS OF CENT WI	PAGER	02/20/2017	\$84.00	P
16170093	DALE LADICK INC	SHELLROCK	02/20/2017	\$551.65	P
16170094	DEAN ALTMANN TRUCKING & EXCAVATING	HAUL EXCAVATOR	02/20/2017	\$285.00	P
16170095	HOME DEPOT CREDIT SERV (Highway)	HEAVY DUTY SHIP TAPE	02/20/2017	\$25.94	P
16170096	PETROTECH LLC	PITTSVILLE FUEL REPAIRS	02/20/2017	\$516.54	P
16170097	SOLARUS	TELEPHONE - ADMINISTRATION	02/20/2017	\$36.33	P
16170098	WATER WORKS & LIGHTING COMM	UTILITIES - HOT MIX PLANT	02/20/2017	\$92.14	P
16170099	WE ENERGIES	NATURAL GAS - HM/MARSH/PITTS	02/20/2017	\$2,198.40	P
16170100	WDATCP	SCALE LICENSE RENEWALS	02/20/2017	\$345.00	P
16170101	MAVO SYSTEMS WISCONSIN LLC	WINDOW AND ELEC PANEL REMOVAL	02/20/2017	\$608.00	P
16170102	PASSINEAU DOUGLAS	OUT OF COUNTY MEAL REIMBURSE	02/20/2017	\$12.00	P
16170103	CNE GAS	NATURAL GAS HOT MIX PLANT	02/22/2017	\$5.69	P
16170104	ACE HARDWARE	BLACK PIPE/HAND SANITIZER	02/28/2017	\$91.92	P
16170105	ALBUS CONVEYORS INC	SALT SPDR CHAIN	02/28/2017	\$964.00	P
16170106	AL'S AUTO GLASS	GLASS REPAIR	02/28/2017	\$210.00	P
16170107	APPLIED INDUSTRIAL TECHNOLOGY	CABLE TIES/WIRE/BITS/SEALS/STE	02/28/2017	\$1,862.51	P
16170108	ARING EQUIPMENT COMPANY	ROCKLAND HYD THUMB/FAN/RESISTO	02/28/2017	\$9,125.15	P
16170109	BAUER BUILT INC	TIRES	02/28/2017	\$7,607.97	P
16170110	BROOKS TRACTOR COMPANY	BOLT KIT/SEALING WASHER/ORINGS	02/28/2017	\$222.72	P
16170111	CARQUEST AUTO PARTS ATLANTA GA	INVERTER/FILTERS/BATTERIES/OIL	02/28/2017	\$3,122.39	P
16170112	CMK STARTER AND ALTERNATOR REBUILD LLC	ARMATURE/SOLENOID	02/28/2017	\$117.79	P
16170113	CUMMINS NPOWER LLC	EGR COOLER KIT	02/28/2017	\$1,264.41	P
16170114	DECKER SUPPLY CO	TRAFCON SOLAR LED LAMP	02/28/2017	\$232.08	P
16170115	DOORWORKS INC	SVC CALL SHOPS/TRANSMITTER	02/28/2017	\$1,035.50	P
16170116	ENVIROTECH EQUIPMENT	STEPP TAR KETTLE BURNER	02/28/2017	\$378.15	P
16170117	FASTENAL COMPANY	BOLTS/SCREWS/BITS/TOPLKS/L/W	02/28/2017	\$83.17	P
16170118	FLEETPRIDE	PUMP	02/28/2017	\$6,406.31	P
16170119	GRAY'S INC	BLADES	02/28/2017	\$9,896.00	P
16170120	INSIGHT FS	LP GAS	02/28/2017	\$1,116.69	P
16170121	LUBE TECH & PARTNERS LLC	MOB - DELVAC/WIND WASH	02/28/2017	\$1,287.15	P
16170122	MSC INDUSTRIAL SUPPLY CO	AIR-OPERATED PUMP	02/28/2017	\$279.99	P
16170123	MID-STATE TRUCK SERVICE INC	CONTROL/FITTING/CRIMP/DOMELIGH	02/28/2017	\$1,375.52	P
16170124	MID-STATES EQUIPMENT INC HYDRAULICS	SERVICE CHARGE	02/28/2017	\$4.52	P
16170125	MID-STATES EQUIPMENT & SUPPLY	ACTUATOR SWITCH	02/28/2017	\$66.03	P
16170126	MILLER-BRADFORD & RISBERG INC	KIT/PIN/ANTENNA	02/28/2017	\$711.10	P
16170127	MISSISSIPPI WELDERS SUPPLY CO INC	WELDING GAS CYL RENTAL	02/28/2017	\$104.72	P
16170128	MONROE TRUCK EQUIPMENT	CYLINDER/TARP/MOTOR KIT/TANK	02/28/2017	\$1,331.87	P
16170129	NAPA AUTO PARTS - MARSHFIELD	TIRE IRONS/TORXKEY SET	02/28/2017	\$303.89	P

County of Wood

Report of claims for: Highway Department

For the period of: February 2017

For the range of vouchers: 16170092 - 16170189

Voucher	Vendor Name	Nature of Claim	Doc Date	Amount	Paid
16170130	NAPA CENT WI AUTO PARTS Wis.Rapids	GEAR BOX/THROTTLE BODY UNIT/	02/28/2017	\$862.68	P
16170131	NAPA AUTO PARTS NEKOOSA	FITTING/HOSE/SWITCH	02/28/2017	\$57.42	P
16170132	NICK MICHELS & SONS	ROOF REPAIR	02/28/2017	\$192.00	P
16170133	NORTH CENTRAL UTILITY OF WI	VESTS/SOLENOID VALVE/LAMPS	02/28/2017	\$613.21	P
16170134	POMP'S TIRE SERVICE INC - GREEN BAY	TIRES	02/28/2017	\$140.00	P
16170135	RAPIDS RENTAL & SUPPLY	CHAINS/MIX/WRENCHES/BAR NUTS	02/28/2017	\$166.55	P
16170136	SCAFFIDI TRUCK CENTER	SHOCK ABSORBERS	02/28/2017	\$189.74	P
16170137	SHERWIN INDUSTRIES INC	HYD MOTOR/MATL PUMP CTRL VALVE	02/28/2017	\$925.81	P
16170138	STAINLESS & REPAIR INC	MOBOARD CYL/CYLINDER AP	02/28/2017	\$1,243.66	P
16170139	STEPP MFG COMPANY INC	PAKTONIC LCD READOUT/RTD PLUG	02/28/2017	\$374.44	P
16170140	TIRE TECHNOLOGIES INC	RIM POWDER COATING	02/28/2017	\$120.00	P
16170141	TRUCK EQUIPMENT INC	HIGH AMP CIR BRKR/GAUGE/CLIP	02/28/2017	\$143.98	P
16170142	UNITED RENTALS EXCHANGE LLC	37- 44' TELESCOPIC BOOM RENTAL	02/28/2017	\$1,851.92	P
16170143	V & H INC	TURBO SPRIN ASY/EGR VALVE/AIR	02/28/2017	\$9,052.97	P
16170144	VAN ERT ELECTRIC COMPANY INC	PARTS REPLACE LIGHTS SHOP	02/28/2017	\$1,492.35	P
16170145	WAUSAU SPRING & ALIGNMENT SERVICE	SPRINGS/U-BOLTS	02/28/2017	\$480.00	P
16170146	WISCONSIN METALS	FLAT/ANGLE IRON	02/28/2017	\$217.60	P
16170147	TOWN OF CRANMOOR	50/50 ROAD/BRIDGE REFUND	02/28/2017	\$4,000.00	P
16170148	TOWN OF GRAND RAPIDS	50/50 ROAD/BRIDGE REFUND	02/28/2017	\$4,000.00	P
16170149	TOWN OF HILES	50/50 ROAD/BRIDGE REFUND	02/28/2017	\$25,335.14	P
16170150	TOWN OF MILLADORE	50/50 ROAD/BRIDGE REFUN	02/28/2017	\$4,000.00	P
16170151	TOWN OF REMINGTON	50/50 ROAD/BRIDGE REFUND	02/28/2017	\$2,253.82	P
16170152	TOWN OF SENECA	50/50 ROAD/BRIDGE REFUND	02/28/2017	\$4,000.00	P
16170153	TOWN OF WOOD	50/50 ROAD/BRIDGE REFUND	02/28/2017	\$4,000.00	P
16170154	CITY OF PITTSVILLE TREASURER	50/50 ROAD/BRIDGE REFUND	02/28/2017	\$4,000.00	P
16170155	VILLAGE OF ARPIN	50/50 ROAD/BRIDGE REFUND	02/28/2017	\$4,000.00	P
16170156	ADVANCE JANITORIAL SERVICE & SUPPLY	CARPET/FLOOR & CLEANING SVC	02/28/2017	\$541.95	P
16170157	ADVANCED DISPOSAL	GARBAGE DISPOSAL	02/28/2017	\$88.92	P
16170158	ALLIANT ENERGY/ WP&L	ELECTRIC - PITTSVILLE	02/28/2017	\$130.62	P
16170159	AT&T-ATLANTA	TELEPHONE - MARSHFIELD	02/28/2017	\$40.36	P
16170160	BADGER LABORATORIES & ENGIN	ASPHALT PLANT REPORTING	02/28/2017	\$500.00	P
16170161	COMPASS MINERALS	SALT FOR SNOW & ICE CONTROL	02/28/2017	\$71,139.73	P
16170162	DEAN ALTMANN TRUCKING & EXCAVATING	HAUL BACKHOE	02/28/2017	\$261.25	P
16170163	FRONTIER	TELEPHONE - MARSHFIELD	02/28/2017	\$111.33	P
16170164	KOLO TRUCKING AND EXCAVATING INC	SAND	02/28/2017	\$2,474.64	P
16170165	MARSHFIELD UTILITIES	ELECTRIC/WATER/SEWER	02/28/2017	\$462.25	P
16170166	MILESTONE MATERIALS	BASE	02/28/2017	\$193,307.10	P
16170167	NIEMAN'S SERVICE INC	HAUL EQUIPMENT	02/28/2017	\$850.00	P

County of Wood

Report of claims for: Highway Department

For the period of: February 2017

For the range of vouchers: 16170092 - 16170189

Voucher	Vendor Name	Nature of Claim	Doc Date	Amount	Paid
16170168	PRECISE MRM LLC	FLAT PLAN USA & GPRS NAF & SOF	02/28/2017	\$621.00	P
16170169	PROVISION PARTNERS	DIESEL FUEL & GASOLINE	02/28/2017	\$27,765.05	P
16170170	QUEST CIVIL ENGINEERS LLC	WETLANDS MONITORING	02/28/2017	\$477.82	P
16170171	RENT-A-FLASH INC	SIGNS	02/28/2017	\$1,932.20	P
16170172	SOLARUS	TELEPHONE - W.R./HOT MIX	02/28/2017	\$222.32	P
16170173	TDS TELECOM	TELEPHONE - PITTSVILLE	02/28/2017	\$141.17	P
16170174	TRACTOR SUPPLY CREDIT PLAN	BULLDOG JACKS/FUEL NOZZLE	02/28/2017	\$121.96	P
16170175	WATER WORKS & LIGHTING COMM	UTILITIES - W.R. & HOT MIX	02/28/2017	\$3,666.61	P
16170176	WE ENERGIES	NATURAL GAS - WR SHOP	02/28/2017	\$1,791.70	P
16170177	TOPCON SOLUTIONS STORE	TOPCON BATTERY PACK	02/28/2017	\$380.00	P
16170178	HAMM BARRY	OUT OF COUNTY MEAL REIMBURSEME	02/28/2017	\$12.00	P
16170179	ADVANCED DISPOSAL	GARBAGE DISPOSAL	02/28/2017	\$71.51	P
16170180	G & K SERVICES	CLEANING RUGS & UNIFORMS	02/28/2017	\$496.20	P
16170181	SOLARUS	TELEPHONE - ADMINISTRATION	02/28/2017	\$36.33	P
16170182	WE ENERGIES	NATURAL GAS - PITTSVILLE/	02/28/2017	\$364.43	P
16170183	STERLING WATER INC	WATER FOR HOT MIX	02/28/2017	\$9.00	P
16170184	ADVANCED DISPOSAL	GARBAGE DISPOSAL Y & T HOUSE	02/28/2017	\$19,151.72	P
16170185	ADVANCED DISPOSAL	GARBAGE DISPOSAL CTH Y&T HOUSE	03/14/2017	\$3,652.45	P
16170186	HOME DEPOT CREDIT SERV (Highway)	STEEL CABINET/CREVICE TOOL/WIP	03/14/2017	\$254.41	P
16170187	WISCONSIN MEDIA	LEGAL NOTICES	02/28/2017	\$142.56	P
16170188	WE ENERGIES	NATURAL GAS - HOT MIX/MARSH	02/28/2017	\$1,075.20	P
16170189	WOOD COUNTY HIGHWAY COMM	PETTY CASH REIMBURSEMENT	02/28/2017	\$72.17	P

Grand Total:**\$460,041.49**Signatures

Committee Chair:

Committee Member:

Committee Member:

Committee Member:

Committee Member:

Committee Member:

Committee Member:

Committee Member:

Committee Member:

**WOOD COUNTY HIGHWAY DEPARTMENT
FUND BALANCES
2017**

	Maintenance	Machinery	Snow Removal	Co-Aid Roads	Co-Aid Bridges	Total Levied Funds	State & Local	Capital Projects	Frac Sand
12/31/2016	\$ 1,027,505.67	\$ 1,184,150.37	\$ 195,761.26	\$ 685,560.42	\$ 7,745.31	\$ 1,916,572.66	\$ (1,325,304.98)	\$ 4,704,005.76	\$ 596,994.57
Levy	171,956.00		907,385.00	67,035.00	200,000.00	1,346,376.00	-	-	-
1/1/2017	\$ 1,199,461.67	\$ 1,184,150.37	\$ 1,103,146.26	\$ 752,595.42	\$ 207,745.31	\$ 3,262,948.66	\$ (1,325,304.98)	\$ 4,704,005.76	\$ 596,994.57
January	(213,796.23)	(68,753.56)	(406,840.42)	-	-	(620,636.65)	(291,922.37)	-	-
State Aids - January	455,780.85					455,780.85			
February	(156,264.29)	131,365.21	(74,421.22)	-	-	(230,685.51)	(72,221.07)	-	-
March	(211,846.60)	19,162.52	(137,958.46)	-	-	(349,805.06)	101,932.88	-	-
April	-	-	-	-	-	-	-	-	-
May	-	-	-	-	-	-	-	-	-
June	-	-	-	-	-	-	-	-	-
July	-	-	-	-	-	-	-	-	-
State Aids - July	-					-			
August	-	-	-	-	-	-	-	-	-
September	-	-	-	-	-	-	-	-	-
October	-	-	-	-	-	-	-	-	-
State Aids - October	-					-			
November	-	-	-	-	-	-	-	-	-
December-Preliminary	-	-	-	-	-	-	-	-	-
Transfer between funds						-			
Balance	\$ 1,073,335.40	\$ 1,265,924.54	\$ 483,926.16	\$ 752,595.42	\$ 207,745.31	\$ 2,517,602.29	\$ (1,587,515.54)	\$ 4,704,005.76	\$ 596,994.57