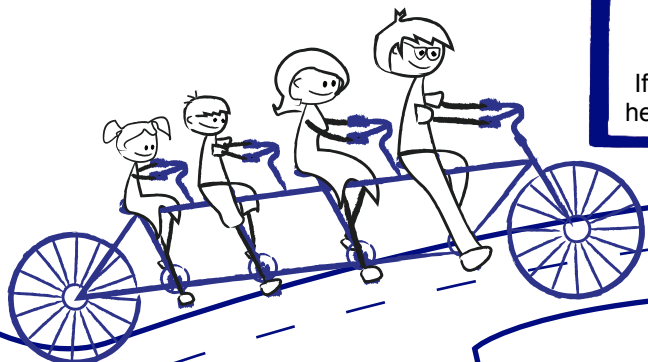


# RESOURCE BIKE PATH



## Welcome to Wood County

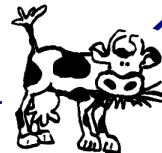
The path to building resiliency in your children starts with social, emotional, occupational, medical and behavioral (mental) health.

If you have concerns about your child's mental or behavioral health, please speak with your child's family doctor or school!

### School Resources

- School case manager – IEP/504/Behavior plan
- Counselor
- Psychologist
- Social Worker
- School Administrator - Student Services

\*\*For regional and state resources see back



### Wood County Health Department 715-421-8911

For a detailed list of local crisis, health, behavioral, alternative therapy, alcohol and drug services and support:

[www.co.wood.wi.us/departments/Health](http://www.co.wood.wi.us/departments/Health)

[www.co.wood.wi.us/departments/HumanServices](http://www.co.wood.wi.us/departments/HumanServices)

- Mental Health/Behavioral Case Management
- Comprehensive Community Services (CCS)
  - Coordinated Services Team (CST)
  - Community Support Programs (CSPs)

\*\*See back for more services

### Crisis Intervention, 24/7 WR: 715-421-2345 MF: 715-384-5555

Certified Mental Health professionals help:

- Provide information and resource referrals
- Problem solve stressful situations
- With assessments for appropriate response
- Listening ear
- Urgent care
- Mobile crisis
- Hospitalization
- Law enforcement



### Children and Youth with Special Health Needs (CYSHCN) Regional Center 1-866-640-4106

[www.northernregionalcenter.org](http://www.northernregionalcenter.org)

A free confidential resource and referral agency for supporting families in finding providers and information in your area

### United Way

[www.getconnected211.org](http://www.getconnected211.org)

Just Dial 2-1-1  
to find community resources

### Aging and Disability Resource Center (ADRC) 715-421-0014 715-384-8479

[www.adrc-cw.com](http://www.adrc-cw.com)

Links clients over age 17.5 years with community-based services and determines eligibility for long-term care programs

### Hopeline- Text Crisis Help Text to 741741. Text - "hopeline" [www.centerforsuicideawareness.org](http://www.centerforsuicideawareness.org)

24/7 Free Wisconsin-based helpline. For anyone on any crisis related topic, such as – suicide, anxiety, panic, 'stressed out', drug/alcohol issues

### Parents Information and Education Resource (PIER)

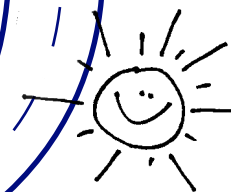
715-423-7182 or  
[pierwi.info@gmail.com](mailto:pierwi.info@gmail.com)

[www.pierwi.info](http://www.pierwi.info)

### Family Voices of Wisconsin

[www.familyvoicesofwisconsin.com](http://www.familyvoicesofwisconsin.com)

What does my Forward Card help me access?  
(resources and fact sheets related to health care)



### National Alliance on Mental Health (NAMI) Portage-Wood Counties: 715-254-1864

[www.namiportagewoodcounties.org](http://www.namiportagewoodcounties.org)

Mental health education support and advocacy

- Classes for parents about social, behavioral, emotional issues, treatment, crisis management and skills
- Alternate support through art & poetry

### State and National Resources

Department of Health Services

[www.dhs.wisconsin.gov/MH\\_BCMH](http://www.dhs.wisconsin.gov/MH_BCMH)

Substance Abuse and Mental Health Services Administration (SAMHSA)

<https://findtreatment.samhsa.gov>

Waisman Center

<http://www.waisman.wisc.edu/families-info-resources.htm>

Mental Health America

[www.mentalhealthamerica.net](http://www.mentalhealthamerica.net)



### Question, Persuade, Refer (QPR) Suicide Prevention Training 715-421-8911

Spend an hour; save a life!  
Contact the Wood County Health Department for more information

Government Resources

Housing Authority.....715-423-7288  
.....715-387-0528

Wood County Human Services Department  
(Main number).....715-421-8600  
Behavioral Health/Long Term Support Services  
.....715-421-8800  
\*\*Crisis Services\*\*.....(Wisconsin Rapids) 715-421-2345  
.....(Marshfield) 715-384-5555  
Mental Health Case Management for Children  
Comprehensive Community Services (CCS)  
.....715-421-8833  
Mental Health / Alcohol & Other Drug Abuse  
.....715-421-8840  
Alcohol & Other Drug Abuse (AODA)  
• Underage Diversion Group  
• OWI Assessment (16 years +)  
• Adolescent AODA Group  
• Adolescent Relapse Prevention Group  
Mental Health Treatment Services  
• Individual Therapy  
• Children/Adolescent Therapy  
• Dual Diagnosis Group  
• Adolescent Anger Services  
• Psychiatry Services  
• Young Women’s Group  
Children with Disabilities.....715-421-8866  
• Birth to Three Program  
• Children’s Long Term Support Waiver  
• Coordinated Service Team (CST)  
Child Abuse & Neglect.....715-421-8600  
Kinship Care.....715-421-8600  
Guardianship.....715-421-8600  
Respite.....715-421-8600

Listings for Mental Health Providers

Wood County Health Department.....715-421-8911  
<http://www.co.wood.wi.us/Departments/Health/>

United Way’s 2-1-1 Information and Referral Line  
.....Dial 2-1-1  
[www.getconnected211.org](http://www.getconnected211.org) <http://uwiw.org/>

Children and Youth With Special Health Care  
Needs (CYSHCN).....1-866-640-4106  
<http://www.northernregionalcenter.org/>

\*\*\*Ministry Health Care <http://ministryhealth.org/>

\*\*\*Aspirus <http://www.aspirus.org/>

\*\*\*Marshfield Clinic  
<https://www.marshfieldclinic.org/>

\*\*\*The starred organizations above provide services such as: home care services, long-term care, behavioral health, insurance, dental, and other services.

2016 WOOD COUNTY Mental Health Resources

Information compiled by Healthy People Wood County and the Wood County Health Department.  
Inclusion or exclusion from this document does not generate endorsement or objection to a program or agency. January 2016

Alternative Therapy Resources

Equine (Horse) Therapy, Art Therapy, Sensory Integration Therapy, Music Therapy, Activities, etc.  
Contact the organizations below for a list of local, state, and national providers.

The Wood County Health Department  
<http://www.co.wood.wi.us/Departments/Health/>

Children and Youth With Special Health Care  
Needs.....1-866-640-4106

Federally Qualified Health Centers

Provide medical/dental/behavioral care for  
• Uninsured/underinsured  
• Non citizen/migrant workers

Family Health Center/Marshfield Clinic  
Health.....715-221-5700.....1-800-942-5420  
Dental Center.....715-221-5600  
<https://www.marshfieldclinic.org/community-resources/family-health-center>

Bridge Community Health Clinic-Wausau  
<http://www.bridgeclinic.org/>.....715-539-8181

Family Health/Laclinica-Wautoma  
<http://www.famhealth.com>.....920-787-5514

Health Care

Katie Beckett– severe emotional disturbances or complex medical needs.....608-397-8850

Supplemental Security Income (SSI)  
Wisconsin Rapids office.....855-686-1465  
Social Security Office.....1-800-772-1213  
TDD.....715-423-3729

Medical Assistance Recipient Hotline–  
Eligibility and rights, covered benefits, list of providers problems with bills, etc.....1-800-362-3002

Medicaid Ombudsman– appeals, complaints, billing problems, for Medicaid HMO enrolls.....1-800-760-0001

Medical Assistance HMO Enrollment Specialists  
.....1-800-291-2002

Thank you to the following sponsors for making it possible to print this document:  
Wisconsin Rapids Public Schools, School District of Marshfield, and Parents Information and Education Resource (PIER)

Education/School Resources

Cooperative Education Services Agency (CESA 5)  
.....1-608-745-5436

Wisconsin Statewide Parent Educator Initiative  
.....715-682-2363 x112

Wisconsin Department of Public Instruction  
.....1-800-441-4563

Wisconsin Family Assistance Center for Education, Training & Support (WI FACETS)  
.....1-877-374-0511

Parent Advocacy Coalition for Educational Rights (PACER).....1-952-838-9000

Wood County Head Start.....715-421-2066  
.....1-800-421-2066

Parenting Resource Centers

Family Resource Center.....715-384-6616

NAMI Portage – Wood Counties.....715-254-1864

Wisconsin Family Ties.....1-800-422-7145

Children & Youth With Special Health Care Needs (CYSHCN).....1-866-640-4106

Transportation Resources

United Way 2-1-1 (database)  
<http://www.referweb.net/uwiw/>

Abby Vans.....1-800-236-8438

River City Cab.....715-424-4595

Wheels of Independence.....1-800-423-7818

Wood County Transportation  
Wisconsin Rapids.....715-421-8989  
Marshfield.....715-389-0230  
Buses in the cities of Wisconsin Rapids and Marshfield and also via volunteer drivers for out of town appointments.

Medical Transportation Management, Inc. (MTM)  
Coordinates transportation for all Medicaid/BadgerCare covered appointments.  
.....1-866-907-1493  
<https://www.mtm-inc.net/wisconsin-website/wisconsin-home/>

Community Resources

St. Vincent de Paul (free clinic)  
149 North Central Avenue, Marshfield.....715-387-0395  
1st & 3rd Wednesday evenings from 5-9 p.m.

Bureau for Deaf & Hard of Hearing  
Videophone.....1-855-359-5252  
<https://www.dhs.wisconsin.gov/odhh/staff/index.htm>

Wausau Vet Center  
605 South 24th Avenue, Suite 24, Wausau  
.....1-715-842-1724.....877-927-8387  
[http://www.vetcenter.va.gov/Vet\\_Center\\_Services.asp](http://www.vetcenter.va.gov/Vet_Center_Services.asp)

Childcarng.....715-423-4114  
(childcare/funding).....1-800-628-8534

Hopes Door (food pantry - clothing).....715-421-2622

Hannah Center (help women in distress due to a life crisis).....715-387-6300

The Family Center (safe shelter, re: domestic violence and sexual assault).....715-421-1511

Shirley’s House of Hope (faith based domestic abuse shelter).....715-486-9000

North Central Community Action Program (CAP)  
Emergency Food Pantry.....715-387-2626  
.....715-424-2581

Personal Development Center (domestic violence - case management, advocacy, and prevention education to individuals and families).....715-384-2971

Youth Shelter & Crisis Help (safe shelter)  
.....715-343-7125

Frederic Ozanam Transitional Shelter (for homeless families).....1-715-384-6555

Project Lifesaver– (for individuals at risk of wandering & being lost).....715-389-0241

Help Guide for South Wood County  
[http://uwiw.org/help\\_hard\\_times.html](http://uwiw.org/help_hard_times.html)

This guide is for people who may be going through a tough time and need help understanding the resources that are available to them. To have a copy mailed to you.  
.....Dial 2-1-1 or (715-421-0390)

See the updated *Bike Path* on the Wood County Health Department website:  
<http://www.co.wood.wi.us/Departments/Health/>

Community Clubhouses (age 18 and older)

Daytime drop-in centers that support all adults living with mental health conditions and/or substance abuse.

They provide:  
• Wellness recovery planning  
• Daily living skills enhancement  
• Recreational activities  
• Educational training

River Cities Clubhouse-Wisconsin Rapids  
.....715-424-4115

A Better Way Clubhouse-Marshfield  
.....715-207-6622

Information, Referral and Advocacy Resources

ABC for Health, Inc.— Statewide benefits, counseling, and legal services for families with children who are having problems financing health care  
<http://www.safetyweb.org/>.....1-800-585-4222

Division of Vocational Rehabilitation (DVR)  
State agency providing employment support (vocational evaluation, training and job placement assistance) for individuals with disabilities age 14 and older  
.....715-422-5050.....1-800-228-1903

FISC– Financial counseling, education and debt management for adult children struggling to gain financial independence, responsibility and support.....1-800-366-8161

Midstate Independent Living Consultants–  
Independent living skills training, information & referral, advocacy, peer support, community education, youth transition conference, recreational and social events, benefits counseling, home modifications, assessments for independent living, assistive technology, and job placement.....1-800-382-8484

Disability Rights Wisconsin– Provides protection and advocacy for persons with disabilities  
.....1-800-928-8778

Employee Assistance Programs (EAP)

EAP services are confidential and generally free of charge to employees. Contact your employer for:  
• Substance abuse  
• Health care concerns  
• Financial or legal concerns  
• Emotional distress  
• Concern with aging parents  
• Family or personal relationship issues includes major life events: births, accidents, or death